

# RUTGERS

New Jersey Agricultural  
Experiment Station

## A GUIDE TO OCEAN COUNTY NEW JERSEY



## FRESH AGRICULTURAL PRODUCTS AND SERVICES 2016



**A GUIDE TO OCEAN COUNTY  
NEW JERSEY  
FRESH AGRICULTURAL PRODUCTS and SERVICES  
2016**

**Published by**

**RUTGERS**

New Jersey Agricultural  
Experiment Station

**of Ocean County**

**This guide is the result of the efforts of the  
Rutgers Cooperative Extension of Ocean County**



# OCEAN COUNTY

## BOARD OF CHOSEN FREEHOLDERS

John P. Kelly, Director

Gerry P. Little, Deputy Director

John C. Bartlett, Jr.

Joseph H. Vicari

Virginia E. Haines

Printed by:

Ocean County Printing and Graphic Arts



Rutgers Cooperative Extension is an equal opportunity program provider and employer. Contact your local Extension Office for information regarding special needs or accommodations. Contact the State Extension Director's Office if you have concerns related to discrimination, 848-932-3584.

*Cooperative Agencies: Rutgers, The State University of New Jersey, U.S. Department of Agriculture, and County Board of Chosen Freeholders. Rutgers Cooperative Extension, a unit of Rutgers New Jersey Agriculture Experiment Station is an equal opportunity program provider and employer.*

**Welcome to Ocean County's**  
**A Guide to Ocean County, New Jersey**  
**Fresh Agricultural Products and Services, 2016**

This guide is intended to help the Ocean County community and those in the Central Jersey area, locate the many agricultural products and services within Ocean County.

As a matter of courtesy, and to be sure of the availability of products listed, it is suggested that potential customers call ahead to any of the farms listed.

This guide is published as a consumer information service and should not be considered an endorsement or recommendation of those listed. Inclusion in the guide is voluntary.

If you have any questions regarding the guide or wish to be included in future editions, please contact:

Rutgers Cooperative Extension of Ocean County

1623 Whitesville Road

Toms River, N.J. 08755

Tel: (732) 349-1246

Fax: (732) 505-8941

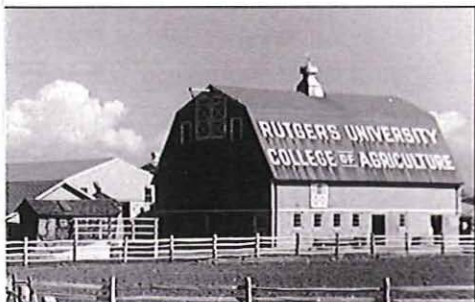
<http://ocean.njaes.rutgers.edu>

Copies of this guide are available at the following locations:

**Rutgers Cooperative Extension of Ocean County**  
**County Connection**

# RUTGERS COOPERATIVE EXTENSION

Rutgers Cooperative Extension is the state wide outreach of Rutgers University. Congress passed the Smith-Lever Act in 1914 that created Extension. Funding is provided by Federal, State, and Local Governments. Researched based, educational programs are provided for N.J. residents through each local county office in the state. The Ocean County office is located in Toms River.



Rutgers Cooperative Extension provides leadership development. It offers practical information to help with decisions on problems facing the public relating to agriculture, home gardens, landscaping, fisheries, the environment, natural resources, nutrition, health, family and economic well being, and youth development.



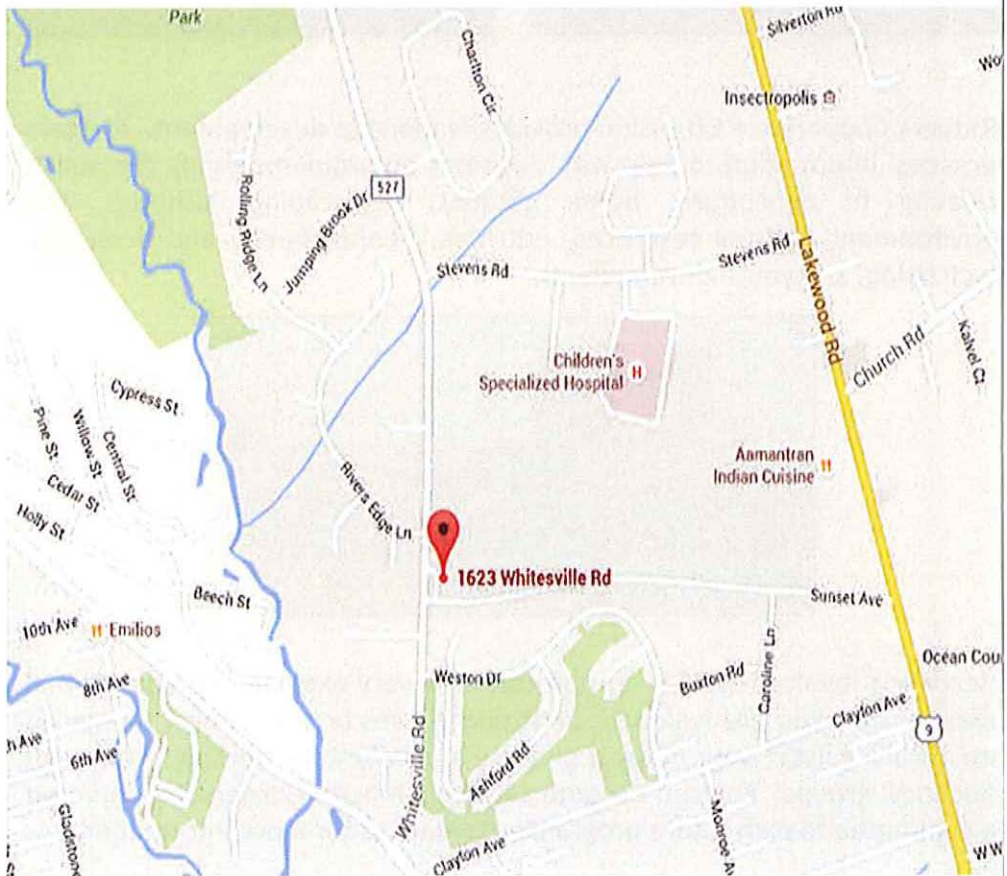
Becoming involved with Extension can be a very exciting and educational experience. You are welcome to attend classes or workshops, be placed on a mailing list of your interest or serve as a volunteer working with youth and local groups. You can become a Rutgers Master Gardener or serve on a committee to plan future programs. Contact us for more information.



**DIRECTIONS TO RUTGERS COOPERATIVE EXTENSION OF OCEAN COUNTY**  
**1623 WHITESVILLE ROAD**  
**TOMS RIVER, NJ 08755**

**Directions from South Jersey:** Parkway North to Exit 83. Keep right to merge onto US 9 N/Lakewood Road. At the first traffic light, make a left onto Route 571. Then make a right at the 4th traffic light which is Whitesville Road (Route 527). Rutgers Cooperative Extension is located approximately 1/4 mile down on the right, on the corner of Sunset Avenue and Whitesville Road.

**Directions from North Jersey:** Parkway South to Exit 89 to Route 70 West. Heading West on Route 70, go through the Route 9 underpass to the second traffic light which will be Whitesville Road (Route 527). Make a left onto Whitesville Road. Rutgers Cooperative Extension is located approximately 2.25 miles on the left, on the corner of Sunset Avenue and Whitesville Road.





# RUTGERS MASTER GARDENERS

## OCEAN COUNTY

Volunteering through Horticulture

Susan Servidio, Horticulturist & Master Gardener Coordinator

732-349-1246 ~ ~ <http://ocean.njaes.rutgers.edu>

Horticultural Helpline

732-349-1245

Monday - Friday ~ ~ 9:00am - 12:00pm

Tick Identification

Plant Diagnostics

Display Garden

Speakers Bureau

Soil pH Tests

Seminars

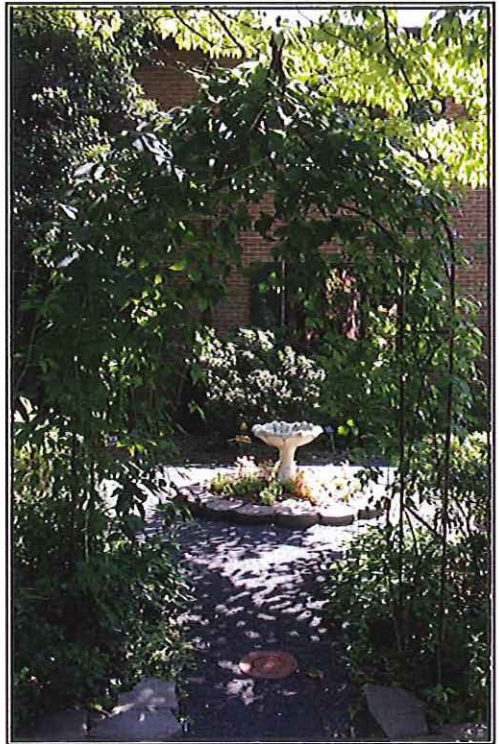
Fall Garden Day

Spring Plant Sale

2016 Master Gardener Calendar

Community Liaison Program

Community Outreach Programs



Rutgers Master Gardeners are trained and certified volunteers who assist the Rutgers Cooperative Extension personnel in providing horticulture information to the residents of Ocean County.

# RUTGERS COOPERATIVE EXTENSION OF OCEAN COUNTY

## DIRECTORY

### ADMINISTRATION ..... (732) 349-4524

Mary Ann Dreikorn ..... mdreikorn@co.ocean.nj.us

### RUTGERS MASTER GARDENERS

Helpline ..... (732) 349-1245

### AGRICULTURAL DEPARTMENT ..... (732) 349-1246

Charlene Costaris ..... oceanag@aesop.rutgers.edu

Susan Servidio ..... oceanag@aesop.rutgers.edu

Deborah Fuentes ..... (732) 505-4563

### ENVIRONMENTAL & RESOURCE MANAGEMENT ..... (732) 505-3671

Steve Yergeau ..... yergeau@njaes.rutgers.edu

Teresa Becker ..... (732) 349-1246

### 4-H YOUTH DEVELOPMENT ..... (732) 349-1227

Tamara Pellien ..... pellien@aesop.rutgers.edu

Hannah Goldmann ..... goldmann@njaes.rutgers.edu

Vicki Riggs ..... (732) 349-1227

### COMMERCIAL FISHERIES & AQUACULTURE ..... (732) 349-1152

Kelly Jurgensen ..... (732) 349-1152

### FAMILY & COMMUNITY HEALTH SCIENCES ..... (732) 349-1247

Joanne Kinsey ..... jkinsey@njaes.rutgers.edu

### SUPPLEMENTAL NUTRITION ASSISTANCE PROGRAM EDUCATION

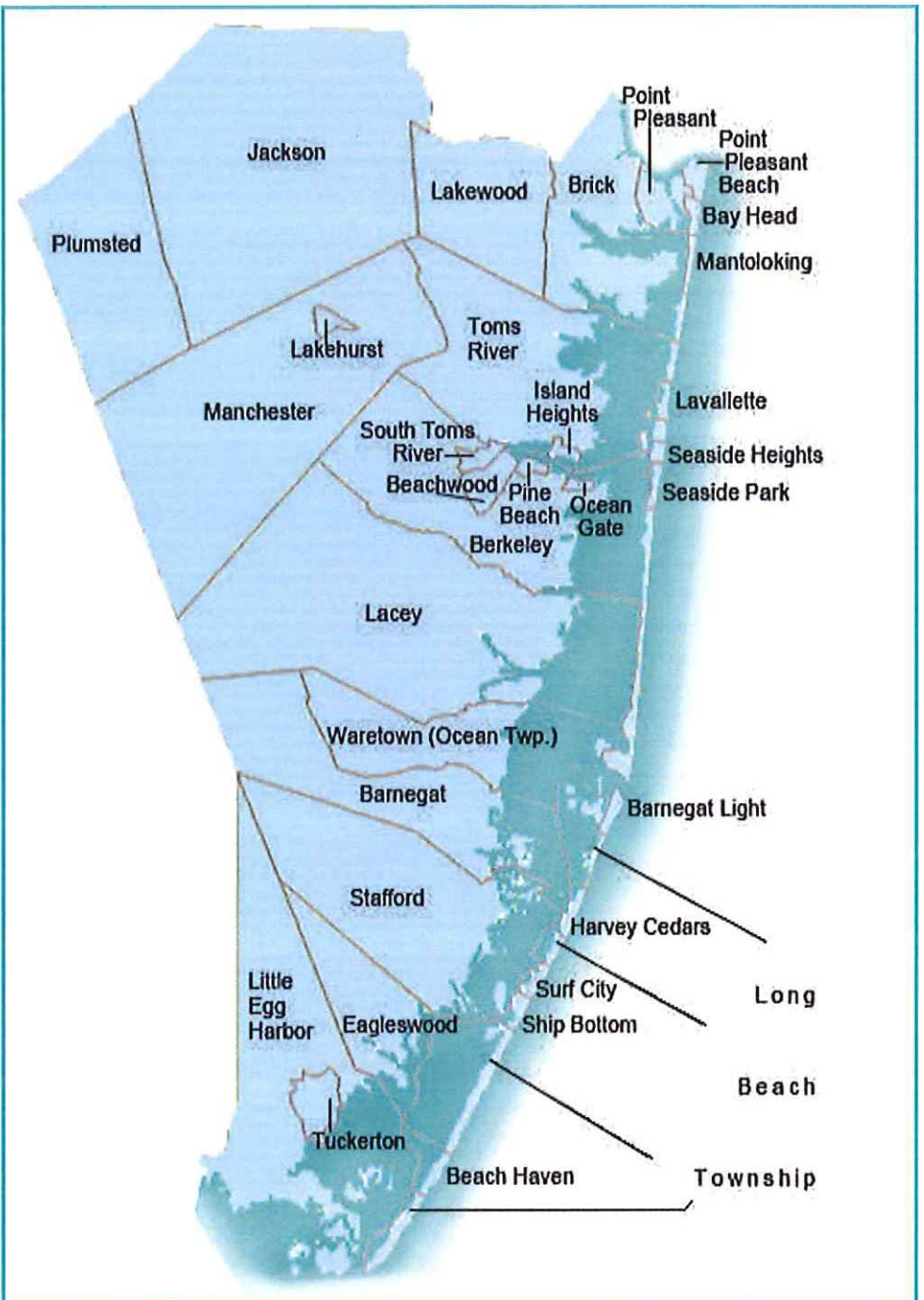
(SNAP - Ed.) ..... (732) 349-1247

Angela Greene ..... greene@njaes.rutgers.edu

WEBSITE ..... <http://ocean.njaes.rutgers.edu>



# MAP OF OCEAN COUNTY NEW JERSEY





# NJ Seasonality Chart

APRIL MAY JUNE JULY AUG. SEPT. OCT. NOV. DEC.

## FRUITS & BERRIES

Apples												
Blackberries												
Blueberries												
Cherries												
Cranberries												
Grapes												
Peaches,Nectarines												
Pears												
Plums												
*Traditional												
*Fall Bearing												
Strawberries												

## VEGETABLES

Arugula												
Asparagus												
Beans												
*Green Snap												
*Wax												
*Yellow												
Beets												
Bok Choy												
Broccoli												
Cabbage												
Carrots												
Cauliflower												
Chard												
Chinese Cabbage												
Collards												
Cucumbers												
*Pickle												
*Salad												
Dandelion Greens												
Eggplant												
*Italian												
*Asian												
Garlic												
Garlic Scapes												
Herbs												
*Basil												
*Chives												
*Cilantro												
*Dill												
*Mint												
*Parsley												

\*Variations of vegetables



# NJ Seasonality Chart

APRIL MAY JUNE JULY AUG. SEPT. OCT. NOV. DEC.

## VEGETABLES

Vegetable	APRIL	MAY	JUNE	JULY	AUG.	SEPT.	OCT.	NOV.	DEC.
<b>Kale</b>									
*Curly		█	█	█	█	█	█	█	█
*Lacinata		█	█	█	█	█	█	█	█
<b>Leeks</b>	█	█	█	█	█	█	█	█	█
<b>Lettuce</b>									
*Bibb		█	█	█	█	█	█	█	█
*Green/Red Leaf		█	█	█	█	█	█	█	█
*Romaine		█	█	█	█	█	█	█	█
*Spring Mix		█	█	█	█	█	█	█	█
<b>Lima Beans</b>				█	█	█	█	█	█
<b>Mustard Greens</b>		█	█	█	█	█	█	█	█
<b>Okra</b>				█	█	█	█	█	█
<b>Onions</b>				█	█	█	█	█	█
<b>Parsnip</b>				█	█	█	█	█	█
<b>Peas</b>		█	█	█	█	█	█	█	█
<b>Peppers</b>									
*Bell		█	█	█	█	█	█	█	█
*Jalapeno		█	█	█	█	█	█	█	█
*Pablano		█	█	█	█	█	█	█	█
*Serrano		█	█	█	█	█	█	█	█
<b>Potatoes</b>									
*Idaho (baking)		█	█	█	█	█	█	█	█
*Wax		█	█	█	█	█	█	█	█
*Yvon Gold		█	█	█	█	█	█	█	█
*Purple		█	█	█	█	█	█	█	█
*Sweet Potato		█	█	█	█	█	█	█	█
<b>Pumpkins</b>							█	█	█
<b>Radish</b>			█	█	█	█	█	█	█
<b>Scallions</b>		█	█	█	█	█	█	█	█
<b>Squash</b>									
*Yellow		█	█	█	█	█	█	█	█
*Zucchini		█	█	█	█	█	█	█	█
*Winter Squash				█	█	█	█	█	█
*Hubbard				█	█	█	█	█	█
*Acorn				█	█	█	█	█	█
*Pumpkin				█	█	█	█	█	█
<b>Spinach</b>		█	█	█	█	█	█	█	█
<b>Sweet Corn</b>				█	█	█	█	█	█
<b>Tatsoi</b>		█	█	█	█	█	█	█	█
<b>Tomatoes</b>									
*Grape		█	█	█	█	█	█	█	█
*Roma		█	█	█	█	█	█	█	█
*Beefsteak		█	█	█	█	█	█	█	█
*Heirloom		█	█	█	█	█	█	█	█
<b>Turnip</b>		█	█	█	█	█	█	█	█

\*Variations of vegetables



# LIST OF FARMS AND THEIR SERVICES

Farms, Producers, & Merchants	FARMER'S MARKETS	U-PICK FARMS	BEEKEEPERS & BEE PRODCUTS	ORGANIC	CHRISTMAS TREES	ROADSIDE MARKET	GARDEN CENTERS	EGGS	AGRITOURISM	JERSEY FRESH	PUMPKINS	FOOD PRODUCTS & CUT FLOWERS
<b>BARNEGAT</b>												
Barnegat Farmer's Mkt	X		X	X								X
Brookville Farms	X		X	X	X	X	X		X	X	X	
Old Halfway Farms LLC		X	X	X		X				X		
Sassafras Hill Farms LLC		X	X			X				X		X
Yellow Dam Farm				X		X		X		X		
<b>BAYHEAD</b>												
Bayhead Farmer's Mkt	X									X		X
<b>BAYVILLE</b>												
Berkeley Farmer's Mkt	X											X
Moore's Farm Market	X				X		X			X		
<b>BRICK</b>												
Berry Fresh Farms	X		X		X		X		X		X	
Brick Farmers Market	X											X
<b>FORKED RIVER</b>												
Anvil Farms Greenhouse			X		X	X				X	X	
Argos Farms	X	X	X		X			X	X	X	X	X
Hammett's Garden Ctr							X					
Lacey Tw sp Farmer's Mkt	X					X				X		X
<b>JACKSON</b>												
Cicconi Farms						X	X			X		
I and G Farms	X				X		X			X	X	
Picea Acres Farms					X							
Rarefind Nursery							X					
The Farm of Stan-Mar									X			
<b>LAKEHURST</b>												
Cedar Post Farm Mkt	X	X			X	X	X			X	X	
Lakehurst Farmer's Mkt	X		X			X				X		X
<b>LAKEWOOD</b>												
Betty's Greenhouses							X					
Robert Schuster								X	X	X		
<b>LANOKA HARBOR</b>												
A's Home & Garden Ctr							X					
RFP			X		X	X	X			X	X	

# LIST OF FARMS AND THEIR SERVICES

Farms, Producers, & Merchants	FARMER'S MARKET'S	U-PICK FARMS	BEEKEEPERS & BEE PRODCUTS	ORGANIC	CHRISTMAS TREES	ROADSIDE MARKET	GARDEN CENTER	EGGS	AGRITOURISM	JERSEY FRESH	PUMPKIN	FOOD PRODUCTS & CUT FLOWERS
<b>LAVALETTE</b>												
Big Ed's Produce			X	X		X				X		X
<b>LITTLE EGG HARBOR</b>												
George T. Mac Connell					X							
My Three Sons Produce	X					X	X			X		
<b>NEW EGYPT</b>												
Big Woods Farm					X		X					
DeWolf's U-Pick Farm LLC	X	X				X			X	X	X	
Hallock's U-Pick Farm LLC	X	X					X			X		
Magnolia Farm								X		X		
Yuletide Christmas Tree		X			X							
<b>POINT PLEASANT</b>												
Pt. Pleasant Farmer's Mkt	X									X		X
<b>SEASIDE PARK</b>												
Seaside Pk Farmers Mkt	X									X	X	X
<b>SHIP BOTTOM</b>												
Cedar Garden LLC							X					
<b>SURF CITY</b>												
Surf City Farmers Mkt	X									X		X
<b>TOMS RIVER</b>												
Berry Fresh Too	X						X			X		
Del's Farm Market					X		X			X		X
Toms River Farmer's Mkt	X		X	X						X		X
Silverton Farm	X		X			X		X				X
Zenjas Honey Farms	X		X									
<b>TUCKERTON</b>												
B & B Produce						X				X		X
Trish Home Center							X					
<b>WARETOWN</b>												
Herbert's Market	X		X		X					X		
Trailside Gardens					X		X	X		X	X	
<b>WHITING</b>												
Champion U-Pick Blueberries		X								X		



# FARMS, PRODUCERS & MERCHANTS

## BARNEGAT



Barnegat Farmer's Market  
Barnegat Township  
Gazebo Park & E. Bay Ave  
Barnegat, NJ 08005  
Tel: 609-698-0080  
[www.barnegat.net/officeofrecreation](http://www.barnegat.net/officeofrecreation)  
June-Oct ~~ Every Thursday 11am-4pm

Brookville Farms  
511 Route 72  
Barnegat, NJ 08005  
Tel: 609-713-1594  
May-Dec ~~ Monday-Sunday 10am-6pm



Old Halfway Farms LLC  
99 Old Halfway Road  
Barnegat, NJ 08005  
Tel: 609-334-0526  
Open all year - 8am-5pm

Sassafras Hill Farm LLC  
184 Route 72 West  
Barnegat, NJ 08005  
Tel: 609-698-1110  
[www.sassafrashillfarm.com](http://www.sassafrashillfarm.com)  
Friday-Sunday 11am-5pm  
(Thurs & Mon. on holiday weekends)



Yellow Dam Farm  
130 Old Halfway Road  
Barnegat, NJ 08005  
Tel: 609-290-6155  
[www.facebook.com/Yellowdam](http://www.facebook.com/Yellowdam)  
Open everyday - Call for times



# FARMS, PRODUCERS & MERCHANTS

## BAY HEAD



Bay Head Farmer's Market

(Municipal Parking Lot)

81 Bridge Ave

Bay Head, NJ 08742

[www.facebook.com/pointpleasantbeachfarmersmarket](http://www.facebook.com/pointpleasantbeachfarmersmarket)

June-Sept ~~~ Every Thursday

## BAYVILLE



Berkeley Twp Farmer's Market

630 Route 9

Bayville, NJ 08721

Tel: 732-269-4456

May-Oct ~~~ Every Tuesday 10am-4pm

Moore's Farm Market

66 Atlantic City Blvd

Bayville, NJ 08721

Tel: 732-349-2876

[www.facebook.com/MooresFarmMarket](http://www.facebook.com/MooresFarmMarket)

March-Dec ~~~ Mon-Sun 8am-6pm

## BRICK



Berry Fresh Farms

151 Brick Blvd

Brick, NJ 08723

Tel: 732-477-0606

March-December

Mon-Sat 9am-7pm; Sun 9am-6pm

Brick Farmer's Market

Windward Beach Park

265 Princeton Ave

Brick, NJ 08724

Tel: 732-757-2891

[www.brickfarmersmarket.com](http://www.brickfarmersmarket.com)

May-Oct ~~~ Every Saturday 9am-12pm



# FARMS, PRODUCERS & MERCHANTS

## FORKED RIVER



Anvil Farms Greenhouse & Farm Mkt  
2523 Anvil Road (Bamber Lake)  
Forked River, NJ 08731  
Tel: 609-384-2299  
[www.anvilfarms.com](http://www.anvilfarms.com)  
May-January ~~ Tue-Sun 9am-6pm

Argos Farm  
1250 Lacey Road  
Forked River, NJ 08731  
Tel: 609-693-3513  
[www.argosfarm.com](http://www.argosfarm.com)  
May-December ~~ Wed-Fri 12pm-6pm  
Sat 10am-6pm; Sun 10am-4pm



Hammett's Landscaping &  
Garden Center Inc.  
425 Route 9  
Forked River, NJ 08731  
Tel: 609-971-0453  
[www.hammettsglc.com](http://www.hammettsglc.com)  
March-December ~~ Mon-Sat 8am-5pm  
Sun 9am-4pm

Lacey Township Farmer's Market  
Lacey Recreation  
203 Lacey Road  
Forked River, NJ 08731  
Tel: 609-693-5222  
[www.facebook.com/laceyfarmersmarket](http://www.facebook.com/laceyfarmersmarket)  
June-Sept ~~ Every Friday 11am-5pm



# FARMS, PRODUCERS & MERCHANTS

## JACKSON



Cicconi Farms  
1005 Farmingdale Road  
Jackson, NJ 08527  
Tel: 732-363-1420  
[www.cicconifarms.com](http://www.cicconifarms.com)  
Plants & Flowers: April-Oct  
Mon-Sun 8am-4:30pm  
Produce Stand: June-Sept  
Mon-Sun 9am-6pm

I & G Farms  
150 Whitesville Road  
Jackson, NJ 08527  
Tel: 732-364-0308  
[www.iandgfarms.com](http://www.iandgfarms.com)  
April-December ~~ Mon-Sat 9am-6pm  
Sun 9am-5pm



Picea Acres Farm  
50 S. New Prospect Rd  
Jackson, NJ 08527  
Tel: 732-370-8733  
[www.piceaacres.com](http://www.piceaacres.com)  
Nov-Dec ~~ Mon-Fri 11am-5pm  
Sat & Sun 9am-5pm

RareFind Nursery  
957 Patterson Road  
Jackson, NJ 08527  
Tel: 732-833-0613  
[www.rarefindnursery.com](http://www.rarefindnursery.com)  
Mail order 12 months/year  
Call for open house schedule



The Farms of Stan-Mar  
311 South Hope Chapel Road  
Jackson, NJ 08527  
Tel: 732-267-1463  
Open All Year - 6am-9pm



## FARMS, PRODUCERS & MERCHANTS

### LAKEHURST



Cedar Post Farm Market &  
Greenhouse  
Route 70 West  
Lakehurst, NJ 08733  
Tel: 732-657-7919  
[www.cedarpostnj.com](http://www.cedarpostnj.com)  
April-Dec ~~ Mon-Sun 8:30am-6:30pm

Lakehurst Farmer's & Specialty Market  
Union Ave & Lake Street  
Lakehurst, NJ 08733  
Tel: 732-674-2957  
June-August  
Every Sunday 8:30am-12:30pm

### LAKESWOOD



Betty's Greenhouses  
2045 Lanes Mills Road  
Lakewood, NJ 08701  
Tel: 732-905-2925  
May-Dec ~~ Mon-Sun 9am-6pm

Robert Schuster Farm  
821 Brook Road  
Lakewood, NJ 08701  
Tel: 732-779-6906  
[www.ejschuster.com](http://www.ejschuster.com)  
Mon-Fri 8am-5pm; Sat & Sun by appt

### LANOKA HARBOR



A's Home & Garden Center  
514 Route 9  
Lanoka Harbor, NJ 08734  
Tel: 609-693-3160  
Mon-Sun 7:30am-6pm

RFP  
615 Route 9  
Lanoka Harbor, NJ 08734  
Tel: 609-693-6215  
March-Dec ~~ Mon-Sun 9am-6pm





## FARMS, PRODUCERS & MERCHANTS

### LAVALLETTE



Big Ed's Produce  
103 Grand Central Avenue  
Lavallette, NJ 08735  
Tel: 732-793-4736  
[www.bigedsproduce.com](http://www.bigedsproduce.com)  
[www.facebook.com/bigedsproduce](http://www.facebook.com/bigedsproduce)  
June-Sept (open Memorial Day weekend)  
Mon-Sun 9am-6pm

### LITTLE EGG HARBOR



Mac Connell Tree Farm  
403 Thomas Avenue  
Little Egg Harbor, NJ 08087  
Tel: 609-296-8998  
Nov-Dec ~~ Mon/Thur/Fri 12pm-5pm  
Sat & Sun 9am-5pm

My Three Sons Seafood & Produce  
850 Route 9  
Little Egg Harbor, NJ 08087  
Tel: 609-296-2589  
[www.mythreesonsseafood.com](http://www.mythreesonsseafood.com)  
April-Nov ~~ Mon-Sun 9am-7pm

### NEW EGYPT



Big Woods Farm/Nursery LLC  
227 Brynmore Road  
New Egypt, NJ 08533  
Tel: 609-758-8002  
Open all year  
Call for hours of operation

Dewolf Farm LLC  
58 W. Colliers Mills Road  
New Egypt, NJ 08533  
Tel: 609-758-6288  
May-Nov ~~ Mon-Sun 7am-7pm  
Fall 8am-7pm



## FARMS, PRODUCERS & MERCHANTS

### NEW EGYPT



Hallock's U-Pick Farm LLC

38 Fischer Road

New Egypt, NJ 08533

Tel: 609-758-8847

[www.hallocksupick.com](http://www.hallocksupick.com)

March-Nov ~ Mon-Fri 7am-7pm

Sat-Sun & Holidays 7am-5pm

Magnolia Farm

32 Magnolia Ave

New Egypt, NJ 08533

Tel: 609-298-9115

[www.magnoliafarmofnewjersey.com](http://www.magnoliafarmofnewjersey.com)

Open all year - 7 days a week

Call ahead for hours of operation



Yuletide Christmas Tree Farm

138 Evergreen Road

New Egypt, NJ 08533

Tel: 732-349-2705

[www.yuletidefarmnj.com](http://www.yuletidefarmnj.com)

December 1st - 23rd 9am-4pm

### POINT PLEASANT



Point Pleasant Farmer's Market

(Borden's Parking Lot)

601 Arnold Ave

Point Pleasant, NJ 08742

[www.facebook.com/pointpleasantbeachfarmersmarket](http://www.facebook.com/pointpleasantbeachfarmersmarket)

June-Sept ~ Every Sunday 10am-2pm



# FARMS, PRODUCERS & MERCHANTS

## SEASIDE PARK



Seaside Park Farmer's Market  
Marina Lawn at J Street  
1701 North Ocean Ave  
Seaside Park, NJ 08752  
Tel: 732-793-3700  
[www.seasideparknj.org](http://www.seasideparknj.org)  
June-Nov ~~ Every Mon & Fri 10am-4pm

## SHIP BOTTOM



Cedar Garden LLC  
1811 Long Beach Blvd  
Ship Bottom, NJ 08008  
Tel: 609-494-5527  
[www.thecedargarden.com](http://www.thecedargarden.com)  
Open all year  
Spring & Summer 9am-5pm  
Fall & Winter 9am-4pm

## SURF CITY



Surf City Farmer's Market  
Surf City Volunteer Fire Company  
713 Long Beach Blvd  
Surf City, NJ 08008  
Tel: 609-494-6127  
[www.surfcityfire.org](http://www.surfcityfire.org)  
June-August ~~ Every Monday 8am-12pm



# FARMS, PRODUCERS & MERCHANTS

## TOMS RIVER



Berry Fresh Too  
2278 Lakewood Road  
Toms River, NJ 08755  
Tel: 732-886-8840  
April-Dec ~ Mon-Sat 9am-7pm  
Sun 9am-6pm

Del's Farm market  
2408 Rt. 37 East  
Toms River, NJ 08753  
Tel: 732-270-3703  
March-Dec ~ Mon-Sun 8am-6pm



Downtown Toms River Farmer's Market  
S.E. Corner of Irons & W. Water St  
Toms River, NJ 08753  
Tel: 732-341-8738  
[www.downtowntomsriver.com](http://www.downtowntomsriver.com)  
May-Oct ~ Every Wed 11am-5pm  
Nov ~ Every Wed 11am-4pm

Silverton Farm  
1520 Silverton Road  
Toms River, NJ 08755  
Tel: 732-244-2621  
[www.silvertonfarmsnj.com](http://www.silvertonfarmsnj.com)  
May-Nov ~ Tue/Thur/Sat 9am-5pm  
Sun 10am-3pm



Zenjas Honey Farms  
322 Marc Drive  
Toms River, NJ 08753  
Tel: 732-341-8529  
Open all year ~ Mon-Sun 8am-5pm



# FARMS, PRODUCERS & MERCHANTS

## TUCKERTON



B & B Produce  
198 W. Main Street  
Tuckerton, NJ 08087  
Tel: 609-296-5541

Open all year ~~ Mon-Sat 9am-6:30pm  
Sun 9am-5:30pm

Trish Home Center  
227 E. Main Street  
Tuckerton, NJ 08087  
Tel: 609-296-5300

Open all year ~~ Mon-Fri 8am-7pm  
Sat 8am-6pm; Sun 9am-5pm

## WARETOWN



Herbert's Market  
372 Route 9  
Waretown, NJ 08758  
Tel: 609-698-7126

June-Dec ~~ Mon-Sun 9am-6:30pm  
\*\*CLOSED WEDNESDAY\*\*

Trailside Gardens  
112 Wells Mills Road  
Waretown, NJ 08758  
Tel: 609-232-8777

April-Dec ~~ Mon-Thur 9am-5pm  
Fri 9am-6pm; Sat 9am-5pm  
Sun 9am-2pm

## WHITING



Champion U Pick Blueberries  
60 Cherry Street  
Whiting, NJ 08759  
Tel: 732-350-4467  
Call for hours of operation





# JERSEY FRESH™

As Fresh As *Fresh* Gets

