

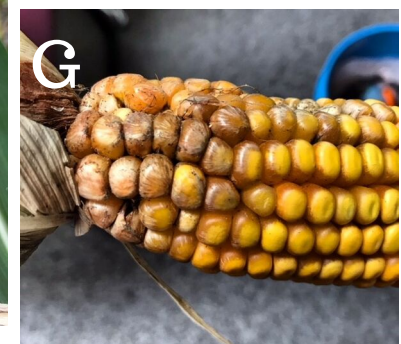
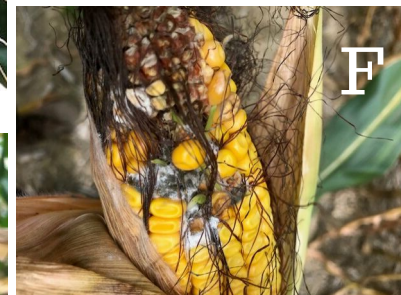
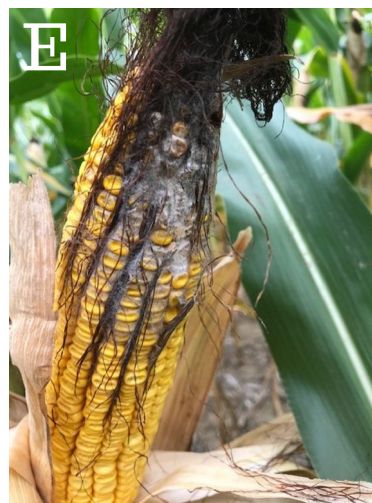
Kernels of Knowledge



CROP TALK MEGAN CORN SEASONAL UPDATE

Insects, Top Leaf Death, and Stalk/Ear Diseases, Oh My!

Let's Talk Crops! With a wet and wild start to the growing season, it was certainly looking to be a rough year for corn. However, our part of the world seems to be blessed with fields that not only survived the crazy weather, but thrived. The biggest issues this year stemmed from insects and slight disease pressure after pollination. Gray Leaf Spot (C), Western Bean Cutworm (B), and Corn Leaf Aphids (A) made appearances throughout the season. Southern Rust was identified in Northern Platte County, but environmental conditions were not conducive for the spread of the disease. As we continue to harvest 2019, top die back and stalk/ear rots may be an issue on your acres. Top die back (D) is primarily caused by Anthracnose, but there are other causes. Cut the bottom of the stalk by the crown for proper ID. Many ear rots are in the mycelial phase and are difficult to identify (E & F). Damage from Western Bean Cutworm or having moisture directly following pollination can cause ear rots to creep up. For ID help see your local agronomist or email me a picture at mtaylor42@unl.edu. Fusarium (G), the starburst, has begun to show symptoms as well.



What are you seeing on your acres? Have questions? Call me at 402-563-4901 or follow along @CropTalkMegan. Have a great harvest! Megan Taylor, UNL Agronomist