

# Yield Data The Scorecard

R.L. Frazier

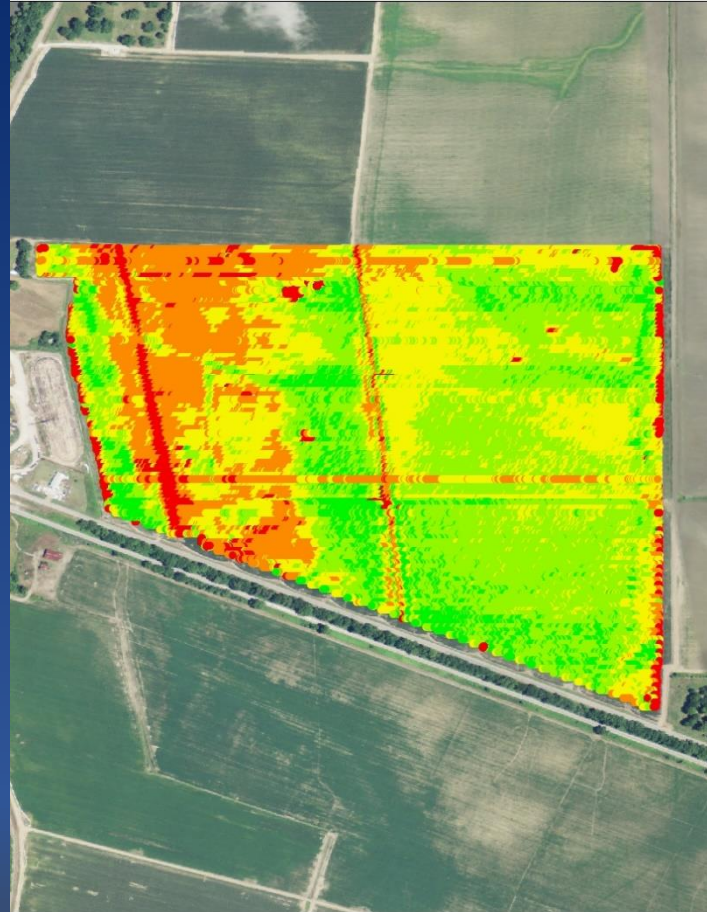
LSU AgCenter

County Agent/GIS Agent

Madison/East Carroll Parishes

# What Makes a Yield Map

The real information contained within a data file





# What Are You Using Your Yield Data For

- Generate a color picture to look at
- Bragging rites to friends
- Check the elevator scales
- Identify areas within a field where there are real yield differences
  - Good an Bad
- Assist with sound management decisions
  - Create management zones
    - Variable rate seeding
    - Variable rate fertilizer and lime
- Irrigation planning

# What Do I Want To Look For

- The 3 R's
- Right Field
  - Need your field name to be consistent
  - Check client, farm, field, when changing locations
- Right Crop
  - Make sure what you are harvesting matches the yield monitor
- Right Year
- KISS
  - Keep it simple stupid



# How Many Zones Do I Need?



10 Zones

5 Zones





# Lets Take A Closer Look



Average Yield 2011  
← 165 bu/ac

Average Yield 2013  
→ 195 bu/ac



# Normalized Yield

- What is normalized yield
- Look at field performance without using bushels per acre
- Identifies a field as average, above average, below average
- Compare yields across several years and multiple crops
- Removes environmental factors
- How do you normalize yield
  - Divide every yield point by the average yield
  - Results 1 average, greater than 1 above average, less than 1 below average
  - Most software will do this for you



2011

**Normalized Yield**

- Below
- Average
- Above

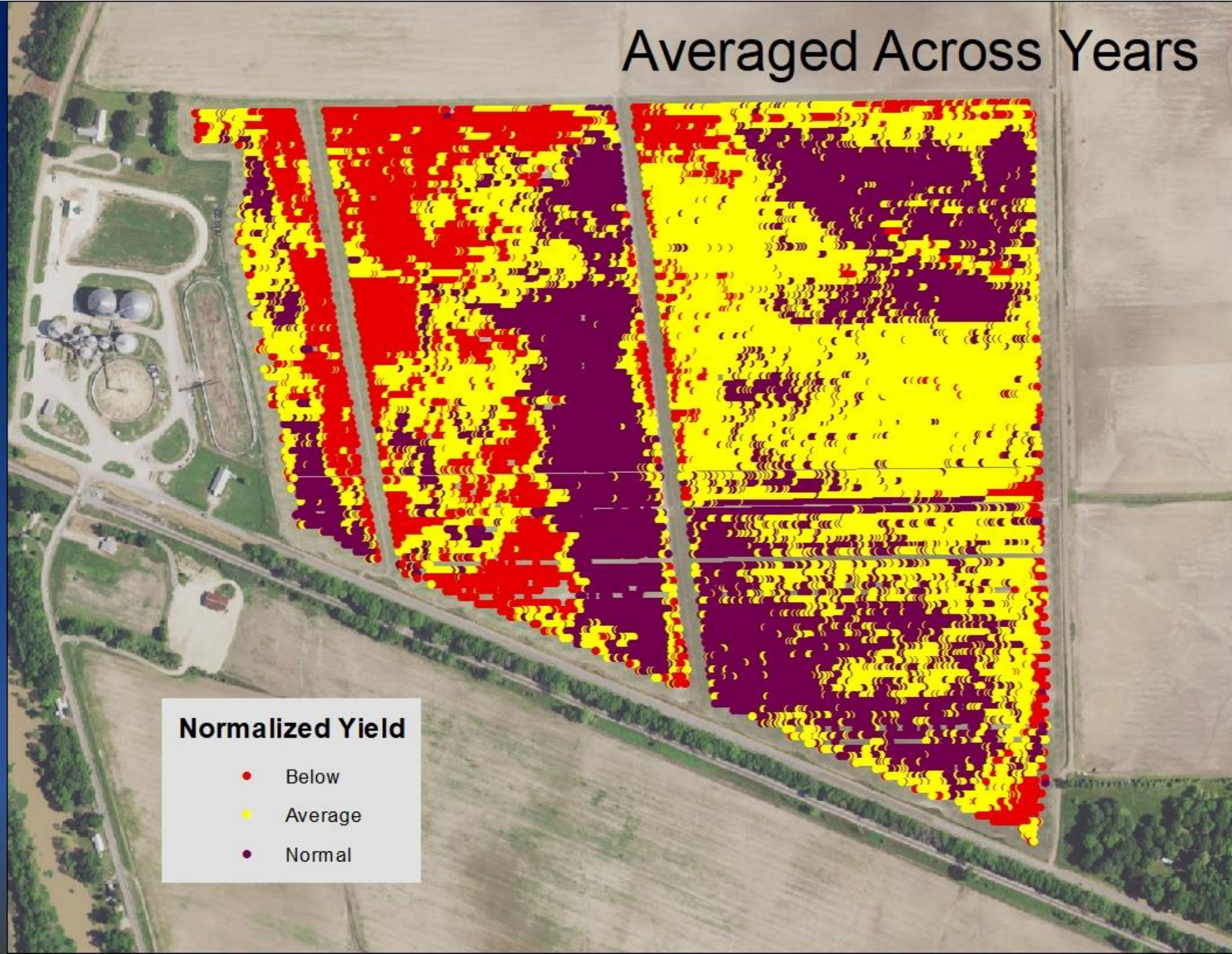
2013

**Normalized Yield**

- Below
- Average
- Above



# Averaged Across Years

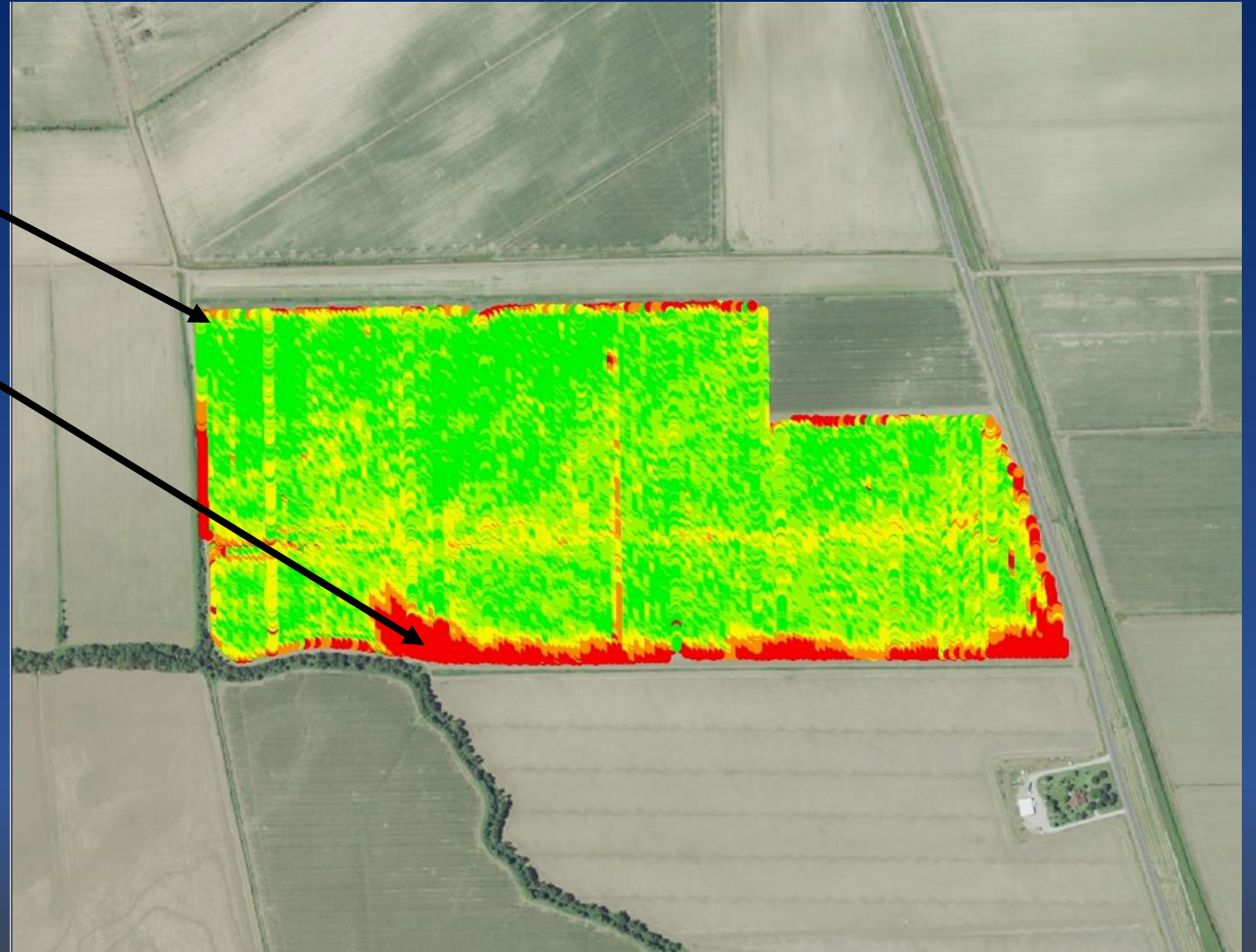




# Identifying and Evaluating Issues

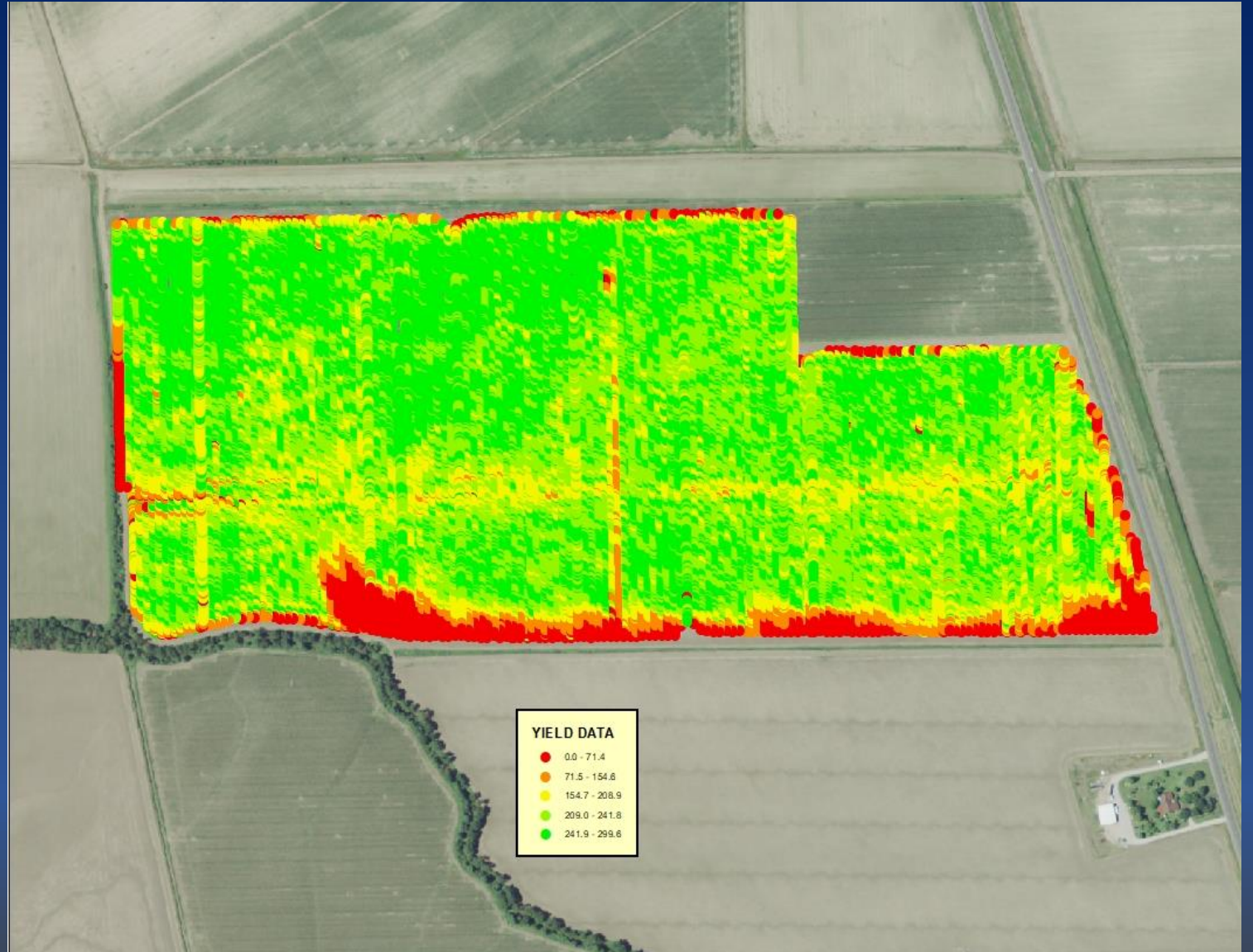
Yield reduction from over watering

Yield loss due to off target application



# What Was The Loss

135 acre field  
Field average 211 Bu.  
Affected area  
    15 acres to drift  
    3 acres to over watering  
Average yield in drift area 95 Bu.  
Average yield at irrigation pipe 100 Bu.





# Conclusion

- Data has no value
- Value is how and what you do with the data
- Precision Ag and Big Data will not save you money but it will make you money in the long haul
- You must have input into any decision on your operation
- **KNOW ONE KNOWS YOUR FIELD LIKE YOU DO**

# QUESTIONS