

2018 Lower Arkansas River Valley Row Crop Demonstration Summary



DIVISION OF AGRICULTURE
RESEARCH & EXTENSION

University of Arkansas System

It is the policy of the University of Arkansas Systems Division of Agriculture to provide equal employment opportunities and to offer all its programs to eligible participants without regard to race, color, sex, gender identity, sexual orientation, national origin, religion, age, disability, marital or veteran status, genetic information, or any other legally protected status.

Table of Contents

	Page
Introduction and Acknowledgments.....	2
River Valley Soybean Verification Field Summary.....	3
Faulkner County Row Crop Demonstrations.....	4
Perry County Row Crop Demonstrations.....	7
Conway County Row Crop Demonstrations.....	11

Introduction and Acknowledgments

The 2018 Lower Arkansas River Valley Row Crop Demonstration summary is a collection of on-farm demonstration results conducted in the Lower Arkansas River Valley area by local County Agents. Demonstrations are the cornerstone of the University of Arkansas System Division of Agriculture Cooperative Extension Service’s mission which is:

“We strengthen agriculture, communities, and families by connecting trusted research to the adoption of best practices.”

On-farm demonstrations allow producers to see firsthand how Extension recommended varieties and best management practices work in their counties and surrounding area.

Conducted by:

Conway County	Kevin Van Pelt, County Extension Agent – Agriculture
Faulkner County	Kevin Lawson, County Extension Agent – Staff Chair
Perry County	Zach Gardner, County Extension Agent – Agriculture

Acknowledgements:

We would all like to express our sincere gratitude to those who offered their land, resources, and time to help conduct demonstrations. Thank you for supporting Extension educational programs.

Cooperating Row Crop Producers

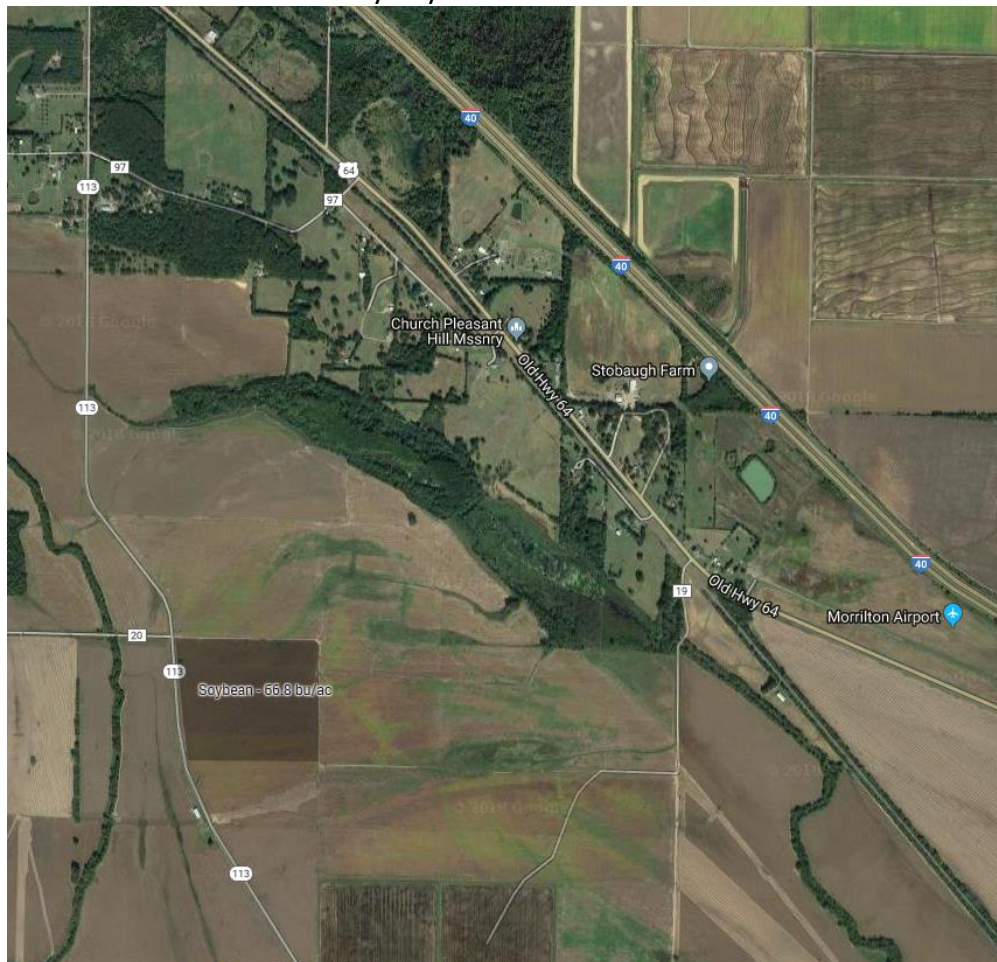
Conway County	3 Brothers Farms, Gregory Brothers Farms, Stobaugh Brothers,
Faulkner County	Schaefers Brothers Farm, Jill Edwards, David Hargrove, Jerry Pearson
Perry County	Joe Thrash, Schaefers Brothers Farm, Gipson Brothers Farm

River Valley Soybean Verification Field Summary

The River Valley County Extension Agents participated in a Soybean Verification Field in 2018. The six counties involved were Conway, Faulkner, Logan, Perry, Pope and Yell. The field was located in Blackwell on Stobaugh Brothers Farms.

The 43 acre field, soil types Gallion and Roxana silt loam, was located south of Blackwell and followed the previous year corn crop. According to soil test recommendations, no fertilizer was applied. Early spring burndown of 1 quart/acre of generic glyphosate plus 2 ounces/acre of Sharpen was applied. Following spring tillage the field was planted May 8 with Pioneer 50A78L, CruiserMaxx seed treatment, at 150,000 seeds/acre. On May 10 1 pint/acre of generic s-metolachlor plus .33 pounds/acre of metribuzin was applied for pre-emerge control. The field emerged May 15 to a plant population of 110,000 plants/acre. Post emerge applications of 1 quart/acre Liberty plus 2 ounces/acre Zidua on May 22 and 29 ounces/acre Liberty on June 6 were utilized for weed control. Disease and insect pressure remained below treatment thresholds and no application was warranted. This field was pivot irrigated 7 times and harvested October 8 yielding 66.8 bushels/acre adjusted to 13% moisture.

River Valley Soybean Verification Location



Faulkner County Row Crop Demonstrations

- **Corn Hybrid Demonstration**
 - A Corn Hybrid Demonstration was established on Chris Schaefer's Farm at Lollie Bottoms. 18 total hybrids were planted, 6 hybrids in the University of Arkansas Standardized Hybrid Trial and 12 hybrids from other companies. Yields ranged from 195.9 to 132.3 bushels per acre with an average of 174.7 bushels per acre.
- **Liberty Link Group IV Soybean Variety Demonstrations**
 - A Liberty Link Group IV Soybean Variety Demonstration was established on the Jill Edward's farm at Lollie Bottoms. 17 total varieties were planted, 15 varieties in the University of Arkansas demonstration and 2 from Local Seed Company. Yields ranged from 66.7 to 46.7 bushels per acre with an average of 55.9 bushels per acre.
 - A Liberty Link Group IV Soybean Variety Demonstrations was planted on the David Hargrove farm north of Wooster. 15 varieties from the University of Arkansas demonstration were planted. The field was not harvested due to flooding at the end of the year.
 - A late planted Liberty Link Group IV Soybean Variety Demonstration was planted behind wheat on the Chris Schaefer's Farm at Lollie Bottoms. The field received 2 inches of rain right after planting and did not emerge to a consistent stand.
- **Corn Earworm Moth Trapping**
 - Two Corn Earworm Moth traps were established in the Lollie Bottoms and Carden Bottoms areas of the county. The purpose of the traps were to monitor Corn Earworm moth numbers during the growing year to help producers predict worm outbreaks in soybeans.
- **Rice Stink Bug Insecticides Evaluation**
 - A research study was established on the Jerry Pearson Farm at Lollie Bottoms. The study was conducted by graduate student Aaron Cato, and Extension Entomologist Nick Bateman. Results were used to establish Extension recommendations on rice stink bug.



U of A DIVISION OF AGRICULTURE
RESEARCH & EXTENSION
University of Arkansas System

COUNTY VARIETY TRIAL

(Faulkner County)

Crop:	Corn	Producer:	Chris Schaefers
Location:	Lollie Bottoms	GPS:	N 34.995 W -92.582
Soil Type:	Gallion Silt Loam	Row Width:	30 inches
Previous Crop:	Soybeans	Planting Rate:	34,000 seeds per acre
Planting Date:	April 11, 2018	Harvest Date:	September 14, 2018

Fertilizer (N-P-K-S-Zn)		Irrigation
Pre-plant	1 ½ tons of chicken litter	Furrow Irrigated 5 Times
Pre-plant	50-38-38-35-0	
Sidedress	127-0-0-0-0	
Total Fertilizer	177-38-38-35-0	

Variety	Adjusted Yield (Bushels/Acre) ¹	% Moisture at Harvest	Plant Stand ²	Lodging Score ³	Test Weight
Terral REV 24BHR99	195.9	16.4	32,000	3	60.2
Terral REV 25BHR26	193.2	15.2	34,000	1	62.5
Terral REV 27BHR79	189.2	15.9	34,500	1	59.5
Croplan 5678VT2	186.4	16.2	32,500	1	60.8
Local 1577VT2P	185.6	16.3	32,000	1	58.8
Armor 1447 PRO2	185.2	15.9	31,000	1	58.8
Armor 1667SS	184.3	15.9	35,000	1	62.3
DynaGro 58VC65	182.8	15.7	35,000	1	60.7
Stine 9808	179.7	16.8	32,000	1	59.5
Terral REV 25BHR89	174.3	16.5	34,000	1	59.0
Terral REV E24Y26828	171.1	16.8	35,500	2	57.4
Terral REV 28BHR18	171.0	17.1	33,000	1	59.3
DynaGro 57VC51	169.9	16.0	35,000	1	59.9
Local 1349 VT2P	166.6	15.5	33,000	1	59.9
Terral REV 25BHR89	166.6	17.0	34,000	1	57.8
Croplan 5290DGVT2	160.2	16.0	33,000	1	58.8
Great Heart 7778	150.6	16.7	34,000	1	58.7
Great Heart 7381	132.3	15.9	32,000	1	60.8

¹ Yield adjusted to 15.5% moisture	² Plant Stand – Plants per acre	³ 1 is no lodging, 10 is completely lodged
---	--	---



U of A DIVISION OF AGRICULTURE
RESEARCH & EXTENSION
University of Arkansas System

COUNTY VARIETY TRIAL

(Faulkner County)

Crop:	Soybeans	Producer:	Jill Edwards
Location:	Lollie Bottoms	GPS:	N 34.962 W -92.546
Soil Type:	Moreland Silty Clay	Row Width:	30 inches
Previous Crop:	Corn	Planting Rate:	140,000
Planting Date:	May 9, 2018	Harvest Date:	October 23, 2018

Fertilizer (N-P-K-S-Zn)	Irrigation
	Pivot Irrigated 8 Times

Variety	Adjusted Yield (Bushels/Acre) ¹	% Moisture at Harvest	Plant Stand ²	Lodging Score ³	Test Weight
Ag Venture 47W3LL	66.7	14.6	113,000	1	53.6
Credenz 4918LL	60.6	13.9	103,000	1	54.2
Delta Grow 4967LL	59.0	14.3	100,000	1	56.4
Ag Venture 49W5LL	58.8	14.5	105,000	1	55.1
Terral REV 47L38	58.1	13.7	105,000	1	54.5
Progeny 4930LL	57.5	14.6	95,000	1	55.8
Go Soy 4912LL	57.4	15.1	110,000	3	57.1
Progeny 4247LL	57.1	13.9	98,000	1	53.8
Dyna Gro 44LS76	57.0	14.0	108,000	1	55.5
Delta Grow 4977 LL/STS	56.9	15.1	109,000	1	57.2
Dyna Gro 49LL34	56.7	14.2	106,000	1	58.0
Dyna Gro 45LL97	56.1	14.7	116,000	1	56.4
Credenz 4308LL	52.7	14.3	107,000	1	53.8
Delta Grow 4587 LL/STS	51.7	14.2	110,000	1	54.1
Go Soy 5115LL	49.8	14.4	112,000	1	57.6
Armor 501L	48.1	14.4	108,000	1	57.4
Terral REV 49L88	46.7	13.8	102,000	1	55.2

¹ Yield adjusted to 13% moisture	² Plant Stand – Plants per acre	³ 1 is no lodging, 10 is completely lodged
---	--	---

*Note:	
---------------	--

Perry County Row Crop Demonstrations

- **Corn Hybrid Demonstration**
 - A Corn Hybrid Demonstration was established on the Joe Thrash farm near the Toad Suck area. 15 total hybrids were planted, 8 hybrids in the University of Arkansas Standardized Hybrid Trial and 7 hybrids in the Terral REV trial. Yields ranged from 208.9 to 167.7 bushels per acre with an average of 191.5 bushels per acre.
- **Liberty Link Late Group IV Soybean Variety Demonstration**
 - A Liberty Link Late Group IV Soybean Variety Demonstration was established on the Chris Schaefer's farm at Toad Suck. 22 total varieties were planted, 16 varieties in the University of Arkansas demonstration and 6 in the Terral REV demonstration. Yields ranged from 81.0 to 67.7 bushels per acre with an average of 75.7 bushels per acre.
- **Roundup Ready Late Group IV Soybean Variety Demonstration**
 - A Roundup Ready Late Group IV Soybean Variety Demonstration was established on the Gipson Brothers Farm in Oak Grove. 17 total varieties were planted, 7 varieties in the University of Arkansas demonstration and 10 in the Terral REV demonstration. Yields ranged from 80.8 to 58.7 bushels per acre with an average of 72.2 bushels per acre.
- **Corn Earworm Moth Trapping**
 - Two Corn Earworm Moth traps were established in the Toad Suck and Oak Grove areas of the county. The purpose of the traps were to monitor Corn Earworm moth numbers during the growing year to help producers predict worm outbreaks in soybeans.
- **Nematode Sampling**
 - Nematode samples were taken in the eastern part of the county along the Arkansas River where the sandier fields are located. Root Knot nematode showed up on susceptible varieties in these areas in 2017 so samples were taken to determine how many fields actually have the pests. Samples are still pending results.



U of A DIVISION OF AGRICULTURE
RESEARCH & EXTENSION
University of Arkansas System

COUNTY VARIETY TRIAL

(Perry County)

Crop:	Corn	Producer:	Joe Thrash
Location:	Lollie Bottoms	GPS:	N 35° 04.522 W 92° 33.018
Soil Type:	Moreland Silty Clay	Row Width:	30 inches
Previous Crop:	Soybeans	Planting Rate:	36,000 seeds per acre
Planting Date:	April 25, 2017	Harvest Date:	September 11, 2017

Fertilizer (N-P-K-S-Zn)		Irrigation
Preplant:	69-57-57-24-0	Pivot Irrigated 1 Time
Sidedress:	102-0-0-24-0	
Pretassel:	46-0-0-0-0	
Total:	217-57-57-48-0	

Variety	Adjusted Yield (Bushels/Acre) ¹	% Moisture at Harvest	Plant Stand ²	Lodging Score ³	Test Weight
Dyna Gro 57VP51	208.9	16.4	33,500	1	58.0
Dyna Gro 58VC37	207.1	15.4	35,500	1	59.2
DeKalb 68-26	203.6	15.8	35,000	1	58.2
Terral REV 23LPR55	196.3	13.5	35,500	1	54.6
Armor 1717	195.2	15.3	34,500	1	58.9
DeKalb 64-35	192.8	17.4	36,000	1	58.6
Terral REV 25BHR26	191.7	14.5	35,000	1	59.3
Terral REV 28-18 AM	191.6	15.5	31,000	1	57.5
Terral REV 28-18 AM	188.3	15.0	30,000	1	58.5
Terral REV 25LPR26	187.9	13.7	36,000	1	57.6
Terral REV 22LPR43	187.9	14.0	35,000	1	57.5
Terral REV 18-84 AM	186.7	13.4	35,000	1	57.3
Terral REV 17-98	184.4	13.5	32,000	1	55.2
Terral REV 26LPR50	181.9	15.6	35,000	1	58.4
Armor 1500	167.7	15.6	31,500	1	58.8

¹ Yield adjusted to 15.5% moisture	² Plant Stand – Plants per acre	³ 1 is no lodging, 10 is completely lodged
---	--	---

Notes:	
---------------	--



U of A DIVISION OF AGRICULTURE
RESEARCH & EXTENSION
University of Arkansas System

COUNTY VARIETY TRIAL

(Perry County)

Crop:	Soybeans	Producer:	Chris Schaefers
Location:	Toad Suck	GPS:	N 35° 04.522 W 92° 33.018
Soil Type:	Roxana Fine Sandy Loam	Row Width:	15 inches
Previous Crop:	Corn	Planting Rate:	140,000 seeds per acre
Planting Date:	May 18, 2017	Harvest Date:	September 28, 2017

Fertilizer (N-P-K-S-Zn)	Irrigation
Preplant: 1 ½ Tons of Litter	Pivot Irrigated 3 Times

Variety	Adjusted Yield (Bushels/Acre) ¹	% Moisture at Harvest	Plant Stand ²	Lodging Score ³	Test Weight
Terral REV 45L57	81.0	10.2	146,000	*	55.6
Dyna Gro 44LS76	81.0	10.8	150,000	*	55.2
Terral REV 49025L	80.5	9.6	150,000	*	55.5
Terral REV 4802L	80.4	10.0	145,000	*	55.8
Progeny 4247LL	79.2	11.0	132,000	*	54.6
Terral REV 48L63	78.0	10.4	133,000	*	55.2
Delta Grow 4977LL	77.9	10.6	157,000	*	56.0
Progeny 4930LL	76.5	10.9	130,000	*	55.1
Go Soy GS4912LL	76.5	11.0	120,000	*	57.3
Terral REV 45L57	76.2	10.2	155,000	*	57.0
Armor 47-L10	75.9	10.4	133,000	*	56.0
Credenz 4748LL	75.5	10.5	131,000	*	55.9
Terral RJS 49025L	75.3	10.0	149,000	*	57.0
Terral REV 54L49	74.8	10.3	149,000	*	56.5
Go Soy GS5115LL	74.2	10.6	146,000	*	55.6
Terral REV 48L63	72.8	10.0	138,000	*	56.1
Dyna Gro 49LL34	72.7	10.2	145,000	*	54.6
Delta Grow 4967	71.3	10.5	150,000	*	56.3
Credenz HBK LL4953	69.1	10.4	130,000	*	56.0
Delta Grow 4587L	68.9	10.9	149,000	*	55.7
Armor 501L	68.6	11.8	145,000	*	54.7
Terral REV 49L49	67.7	10.3	143,000	*	56.4

¹ Yield adjusted to 13% moisture	² Plant Stand – Plants per acre	³ 1 is no lodging, 10 is completely lodged
---	--	---

Notes: *Lodging scores were not taken.



U of A DIVISION OF AGRICULTURE
RESEARCH & EXTENSION
University of Arkansas System

COUNTY VARIETY TRIAL

(Perry County)

Crop:	Soybeans	Producer:	Gipson Brothers
Location:	Oak Grove	GPS:	N 34° 58.930 W 92° 43.351
Soil Type:	Perry Clay	Row Width:	15 inches
Previous Crop:	Soybeans	Planting Rate:	160,000 seeds per acre
Planting Date:	June 21, 2017	Harvest Date:	October 20, 2017

Fertilizer (N-P-K-S-Zn)		Irrigation
Preplant:	18-46-60-0-0	Furrow Irrigated 3 Times
Total:	18-46-60-0-0	

Variety	Adjusted Yield (Bushels/Acre) ¹	% Moisture at Harvest	Plant Stand ²	Lodging Score ³	Test Weight
Dyna Gro SX17345XT	80.8	12.3	115,000	1	49.9
Terral REV RJS48019R	80.5	12.3	110,000	1	58.6
Terral REV 4927X	79.4	12.3	110,000	1	56.6
Terral REV RJS45011R	79.3	12.2	110,000	1	55.9
Dyna Gro SX17852XT	79.1	11.9	115,000	1	54.1
Terral REV 48A76	77.7	11.7	100,000	1	57.7
Terral REV RJS49020R	77.0	12.2	115,000	1	58.0
Terral REV 48A26	75.1	12.5	135,000	1	56.6
Armor 48D24	72.8	12.4	116,000	1	54.0
Terral REV 49R94	71.9	12.2	120,000	1	56.7
Terral REV 47R34	71.8	13.0	110,000	1	55.9
Terral REV 45A46	70.3	11.9	122,000	1	50.4
Terral REV 4857X	69.1	12.9	125,000	1	56.0
Armor 5107	62.7	11.3	110,000	1	53.9
Dyna Gro S48XT56	61.7	12.9	125,000	1	53.7
Dyna Gro S49XS88	59.1	11.0	105,000	1	56.4
Dyna Gro SX17846XS	58.7	12.5	130,000	1	50.8

¹ Yield adjusted to 13% moisture	² Plant Stand – Plants per acre	³ 1 is no lodging, 10 is completely lodged
---	--	---

Notes:	
---------------	--

Conway County Row Crop Demonstrations

- **Corn Hybrid Demonstration**
 - A Corn Hybrid Demonstration was conducted with the cooperation of Josh, Luke and Nick Moore on the 3 Brothers Farm south of Plumerville. Twelve hybrids were planted and the yields ranged from 174.55 to 220.76 bushels per acre with an average of 202.43 bushels per acre.
- **Roundup Ready Group IV Soybean Variety Demonstration**
 - A Roundup Ready Group IV Soybean Variety Demonstration was conducted with the cooperation of Josh, Luke and Nick Moore on the 3 Brothers Farm south of Plumerville. Eight varieties, from a 4.4MG to a 4.9MG, were planted. Yields ranged from 70.21 to 80.76 bushels per acre with an average of 74.88 bushels per acre.
- **Liberty Link Soybean Variety Demonstration**
 - A Liberty Link Soybean Variety Demonstration was conducted with the cooperation of James and Rusty Gregory on their farm south of Morrilton. 13 different varieties, from a 4.2MG to a 5.1MG, were planted. Yields ranged from 73.18 to 81.32 bushels per acre with an average of 76.95 bushels per acre.
- **Corn Earworm and Southwest Corn Borer Moth Trapping**
 - Two Corn Earworm Moth traps and a Southwest Cornborer trap were established in the Plumerville and Blackwell areas of the county. The purpose of the traps were to monitor moth numbers during the growing year to help producers predict worm outbreaks in soybeans and corn.
- **Soybean Inoculant Demonstration**
 - A Soybean Inoculant Demonstration was conducted on the 3 Brothers Farm south of Plumerville. The demonstration consisted of three replications of a Roundup Ready soybean variety without inoculant and with inoculant treatment planted in late May. There was no significant difference in yield.
- **Soybean Pre-emerge Herbicide Demonstration**
 - A soybean herbicide demonstration was conducted on the 3 Brothers Farm south of Plumerville to evaluate the efficacy of different pre-emerge herbicide programs for glyphosate resistant pigweed control.



U of A DIVISION OF AGRICULTURE
RESEARCH & EXTENSION
University of Arkansas System

COUNTY VARIETY TRIAL

(Conway County)

Crop:	Corn	Producer:	3 Brothers Farm
Location:	Plumerville	GPS:	N 35 7.408, W 92 38.157
Soil Type:	Silt Loam	Row Width:	30"
Previous Crop:	Soybeans	Planting Rate:	32,500 seeds per acre
Planting Date:	April 13, 2017	Harvest Date:	September 9, 2017

Fertilizer (N-P-K-S-Zn)		Irrigation
Preplant:	44-0-120-24-0	Pivot irrigated 5 times
Sidedress:	90-0-0-0-0	
Pretassel:	70-0-0-0-0	
Total:	204-0-120-24-0	

Variety	Adjusted Yield (Bushels/Acre) ¹	% Moisture at Harvest	Plant Stand ²	Lodging Score ³	Test Weight
Pioneer P2160YHR	206.67	17.7	32,000	1	58.4
Terral REV 25BHR26	206.23	15.9	31,500	1	60.1
DeKalb 68-26	194.59	16.6	30,500	1	57.6
Dyna-Gro D58VC37	217.16	16.1	32,000	1	60.1
Progeny PGY7215VT2P	186.90	15.3	31,000	1	59.9
Armor 1500 PRO	174.55	15.5	28,000	1	60.1
Terral REV 2818AM	194.37	17.1	30,500	1	59.2
Dyna-Gro D57VC51	220.76	15.7	32,500	1	60.4
Pioneer P1197YHR	204.54	14.6	31,500	1	57.7
Armor 1717 PRO	206.00	15.5	31,000	1	60.2
Progeny PGY7115VT2P	203.97	14.6	30,000	1	58.8
DeKalb 64-35	213.40	15.5	31,500	1	61.5

¹ Yield adjusted to 15.5% moisture ² Plant Stand - # of plants per acre ³ 1 is no lodging, 10 is completely lodged

Notes:



U of A DIVISION OF AGRICULTURE
RESEARCH & EXTENSION
University of Arkansas System

COUNTY VARIETY TRIAL

(Conway County)

Crop:	RR Soybeans	Producer:	3 Brothers Farm
Location:	Plumerville	GPS:	N 35.1387, W -92.6354
Soil Type:	Clay Loam	Row Width:	15"
Previous Crop:	Soybeans	Planting Rate:	135,000 seeds per acre
Planting Date:	May 23, 2017	Harvest Date:	October 8, 2017

Preplant:	Fertilizer (N-P-K-S-Zn) 0-0-120	Irrigation Pivot irrigated 8 times
------------------	---	--

Variety	Adjusted Yield (Bushels/Acre) ¹	% Moisture at Harvest	Plant Stand ²	Lodging Score ³	Test Weight
Terral REV 48A76	72.10	12.8	114,000	1	57.1
Progeny P4516RXS	74.68	12.6	112,500	1	57.2
Terral REV 48A26	80.76	13.2	120,500	1	56.4
Armor ARX4407	70.21	12.5	109,500	1	56.5
Terral REV 49R94	73.67	12.0	109,000	1	57.5
Progeny P4620RX	76.67	11.8	129,000	1	57.6
Armor ARX4807	74.15	12.4	122,000	1	56.4
Pioneer P47T36R	76.81	11.8	125,000	1	60.4

¹ Yield adjusted to 13% moisture	² Plant Stand - # of plants per acre	³ 1 is no lodging, 10 is completely lodged
---	---	---

Notes:	Earworm pressure reached treatment threshold numbers at about R3 and the field was treated with Prevathon.
---------------	--



U of A DIVISION OF AGRICULTURE
RESEARCH & EXTENSION
University of Arkansas System

COUNTY VARIETY TRIAL

(Conway County)

Crop:	LL Soybeans	Producer:	Gregory Brothers Farm
Location:	Sandtown Bottoms	GPS:	35.099630, -92.710483
Soil Type:	Sandy Loam	Row Width:	15"
Previous Crop:	Wheat	Planting Rate:	155,000 seeds per acre
Planting Date:	June 12, 2017	Harvest Date:	October 26, 2017

Preplant:	Fertilizer (N-P-K-S-Zn) 0-0-0	Irrigation Pivot irrigated 8 times
------------------	---	--

Variety	Adjusted Yield (Bushels/Acre) ¹	% Moisture at Harvest	Test Weight
Go Soy GS4912LL	76.93	11.0	56.6
Dyna Gro S44LS76	73.18	11.9	56.2
Bayer Credenz 4748LL	74.58	10.6	57.1
Go Soy GS5115LL	73.96	10.7	55.5
Progeny P4930LL	80.03	10.4	57.9
Dyna Gro S49LL34	79.45	10.5	56.3
Terral RJS49025L	80.32	10.6	56.2
Terral 45L57	81.32	10.9	57.5
Armor 47L10	75.50	10.4	56.5
Progeny P4247LL	74.65	10.7	55.2
Terral REV 48L63	74.13	11.2	55.1
Bayer Credenz HBKLL4953	75.62	10.5	57.0
Armor 501L	80.67	10.3	57.0

¹ Yield adjusted to 13% moisture	² Plant Stand - # of plants per acre	³ 1 is no lodging, 10 is completely lodged
---	---	---

Notes:	Two of the irrigations were from the waste water pond of a hog production facility.
---------------	---

University of Arkansas 2017 Conway County Soybean Inoculant Demonstration



County: Conway Crop: RR Soybean

Grower: 3 Brothers Farm

County Agent: Kevin Van Pelt

Location of Field: Plumerville 35.1387, -92.6354

Soil Type: Clay Loam

Previous Crop: Soybeans

Planting Date: May 23, 2017

Row Width: 15"

Planting Population: 135,000

Harvest Date: October 8, 2017

Fertility: (lb/ac)

--- Preplant

Total Fertility:

N	P	K	S	Zn
		120		
0	0	120	0	0

Irrigation Type: Pivot Number of Times: 8

Variety	Adj. Yield ¹	Area	Weight	Yield	% Moisture	Test Weight
Progeny 4900RY	74.58	0.612	2,524	73.65	11.9	57.0
Progeny 4900RY Inoculated	73.43	0.612	2,488	72.60	12.0	55.9
Progeny 4900RY	71.25	0.612	2,414	70.44	12.0	57.1
Progeny 4900RY Inoculated	74.90	0.612	2,532	73.88	11.8	56.1
Progeny 4900RY	72.13	0.612	2,444	71.31	12.0	57.1
Progeny 4900RY Inoculated	71.86	0.612	2,432	70.96	11.9	56.8

¹ Yield is adjusted to 13% moisture.

2018 Pre-emerge Herbicide Demonstration in Roundup Ready Soybeans

Applied May 18, 2017			Approximate Cost /A	Notes
1)	Paraquat	40 oz/A		
	Dual	1.33 pts/A	\$9.59	Weak on marestail and mg control
2)	Paraquat	40 oz/A		
	Dual	1.33 pts/A		
	Sencor	8 oz/A	\$14.09	Weak on marestail and mg control
3)	Paraquat	40 oz/A		
	Trivence	8 oz/A	\$20.40	Weak on marestail control
4)	Paraquat	40 oz/A		
	Zidua	2.5 oz/A	\$21.97	
5)	Paraquat	40 oz/A		
	Zidua	2.5 oz/A		
	Sencor	8 oz/A	\$26.47	
6)	Roundup	1 qt/A		
	2,4-D	1.5 pts/A		
	Trivence	8 oz/A	\$22.87	
7)	Roundup	1 qt/A		A few pigweed escapes with
	Warrant Ultra	3 pts/A	\$18.81	more coming through at 2 weeks
8)	Paraquat	40 oz/A		
	Verdict	5 oz/A	\$10.54	
	AMS			
	MSO			
9)	Paraquat	40 oz/A		
	Valor	2 oz/A		
	Sencor	8 oz/A	\$14.62	