

GRAIN CORN VARIETY TRIAL

Fact Sheets

Please find annual fact sheets below from the Grain Corn Variety Trial. These handouts contain the varieties tested, inputs, yield data and other important production information. These fact sheets are available on the North Florida Research and Education Center website and are distributed at field days and production meetings across the state of Florida.

2020 North Florida Research and Education Center-SV BMP Grain Corn Variety Trial

K. Wynn, UF/IFAS Extension Hamilton County; B Broughton, North Florida Research and Education Center-SV Farm Manager;
D. Broughton, UF/IFAS Regional Specialized Agent, Agronomic Crops; N. Dufault, UF/IFAS Plant Pathologist;
K. Korus, UF/IFAS Extension Alachua County. J Love, UF/IFAS BMP Education/Training Specialist

Date	Details	Date	Details
Fall 2019	Wrens Abruzzi rye cover crop planted	4-3-20	Herbicides Round-up Power Max Moccasin II Atrazine
2-27-20	Herbicides Round-up and Crossfire applied to burn down rye	5-13-20	Herbicide Round-up Power Max
3-20-20	Soil was strip-tilled	5-29-20	Injected through pivot in 50 gallons of water 2 oz Citrasan Powder 16 oz Nutra Trac 4 Gallons Cal Carb (1 gallon per acre)
4-2-20 and 4-3-20	Corn planted at a targeted seeding rate of 30,000 seed/acre in 30" rows Insecticide/nematicide Counter 6 lbs/acre Liquid starter fertilizer 23-9-0 at 16 Gallons/acre Harrell's controlled release fertilizer 24-0-17 Banded by row at 730 lbs/acre (Total fertilizer rates were 215 lbs Nitrogen, 16 lbs phosphorus, and 124 lbs potassium per acre)	6-15-20	6.8 oz/acre Approach prima fungicide injected through pivot
		6-26-20	Injected through pivot in 50 gallons of water 4 oz BiCarb X 16 oz Nutra Trac 4 Gallons Sulfur Carb (1 gallon per acre)
		8-9-20	Harvested at 129 days old

Company	Variety	Number of Plants	Number of Ears	Test Weight	Bushel Per Acre ^a
Agratech	711VT2P	31.0	30.3	59.0	174.1 bcde
Agratech	88VT2P	31.0	30.8	55.0	167.0 de
Croplan	CP5678VT2PCPF2	31.8	31.3	59.6	201.0 a
Croplan	CP5340VT2PCPR2	31.0	29.5	58.7	185.6 abcd
Dekalb	DKC68-69	32.3	32.5	58.6	182.3 abcd
Dekalb	DKC70-27	31.0	30.3	58.4	169.0 cde
Dyna-Gro	D54VC14	31.5	30.3	59.2	189.4 ab
Dyna-Gro	D58VC65	32.0	31.5	59.6	188.9 ab
Local Seed	LC1776VT2P	31.8	31.5	59.1	186.1 abc
Local Seed	LC1987VT2P	31.8	31.3	59.0	179.8 bcd
NK	1677-3110	30.8	30.3	56.8	187.1 abc
NK	1460-5222	31.5	31.0	55.7	157.3 e
Pioneer	P1847YHR	34.3	34.3	58.9	200.4 a
Pioneer	P1870YHR	33.3	32.8	57.6	159.0 e
	Mean	31.8	31.2	58.2	180.5
Least Significant Difference (LSD)		Not Significant	2.7	1.0	19.1
P-value		0.22	0.03	< 0.001	< 0.001

^a Column numbers followed by different letters are significantly different at P=0.05 by Fisher's protected LSD

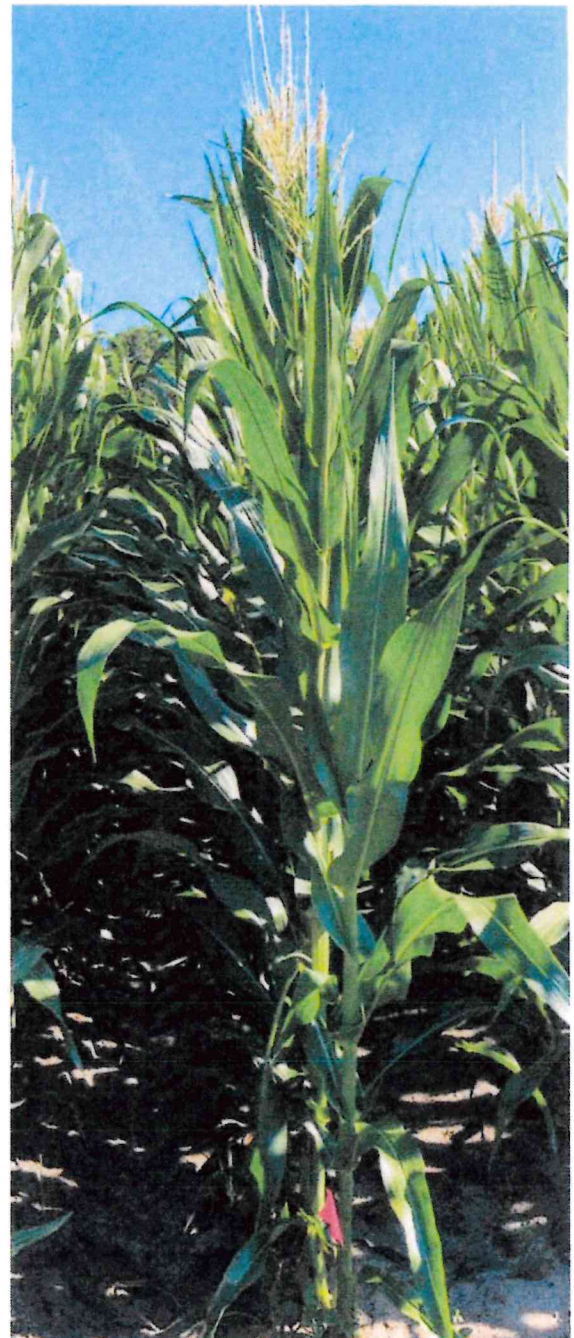
Note: Harvest sample size was 1/1000th of an acre

2021 North Florida Research and Education Center-SV BMP Grain Corn Variety Trial

K. Wynn, UF/IFAS Extension Hamilton County; E. Beach, UF/IFAS Extension Lafayette County; B. Broughton, UF/IFAS North Florida Research and Education Center-SV Farm Manager; D. Broughton, UF/IFAS Regional Specialized Agent, Agronomic Crops; N. Dufault, UF/IFAS Plant Pathologist; K. Korus, UF/IFAS Extension Alachua County; J Love, UF/IFAS BMP Education/ Training Specialist

Date	Details
Fall 2020	Wrens Abruzzi rye cover crop planted
2/2021	Herbicides Round-up and Crossfire applied to burn down rye
3-24-21	0-0-60 Pre-Plant fertilizer broadcast at 125 lbs/acre
3-24-21	Soil was strip-tilled
3-25-21 and 3-26-21	Corn planted at targeted seeding rate of 30,000 seed/acre on 30" rows 23-9-0 Liquid starter fertilizer at 15 gal/acre placed by the row 2"x2" Insecticide/nematicide Counter in furrow at 5.4 lbs/acre
3-27-21	Herbicides Moccasin II at 16 oz/acre and Atrazine at 32 oz/acre
4-20-21	9-7-28 fertilizer banded by row with 1st Products Rig at 571 lbs/acre
5-5-21	Herbicides Round-up Power Max at 22 oz/acre and Atrazine at 32 oz/acre
5-5-21	28-0-0-5 Liquid fertilizer sidedress banded at 12.5 gal/acre
5-13-21	28-0-0-5 Liquid fertilizer sidedress banded at 12.5 gal/acre
5-14-21	Fungicide Approach Prima applied at 6.8 oz/acre
5-21-21	28-0-0-5 Liquid fertilizer sidedress banded at 12.5 gal/acre
5-28-21	28-0-0-5 Liquid fertilizer sidedress banded at 12.5 gal/acre
8-23-21	Harvested at 151 days old

Type of Fertilizer Used	Total Fertilizer Used
Nitrogen	240 lbs/acre
Phosphorus	56 lbs/acre
Potassium	235 lbs/acre
Sulfur	57.4 lbs/acre
Magnesium	8.5 lbs/acre
Boron	.74 lbs/acre
Manganese	5.6 lbs/acre
Zinc	2.5 lbs/acre





Company	Variety	Number of Plants	Number of Ears	Test Weight	Bushel Per Acre
Agratech	68VT2P	30.5	30.3	58.3	196.6
Agratech	85VT2P	34.0	33.5	58.3	218.5
Agrigold	A647-35-5222	32.5	32.3	53.2	219.9
Agrigold	A6659VT2RIB	33.8	33.8	57.5	219.7
Croplan	CP5340VT2PCPR2	32.8	32.8	57.2	208.4
Croplan	CP5678VT2PCPF2	35.0	34.8	58.7	224.1
Dekalb	DKC68-69	34.0	33.0	59.0	224.8
Dekalb	DKC69-99	33.3	33.3	58.8	211.8
Dyna-Gro	D54VC14	33.8	33.5	58.5	222.8
Dyna-Gro	D55VC80	35.0	35.0	56.5	227.7
Local Seed	LC1577VT2P	32.5	32.3	58.7	214.7
Local Seed	LC1898TC	33.0	32.0	57.7	232.0
NK	NK1677-3110	32.3	32.3	56.8	205.5
NK	NK1748-3110	34.8	33.5	54.9	226.2
Pioneer	P1870YHR	33.3	33.3	57.4	209.3
Pioneer	P2042YHR	36.0	36.0	56.9	229.5
Seedway	8100GenSS	33.8	33.8	59.7	205.8
Seedway	SW1579SSCRIB	33.8	33.8	57.8	223.7
Triangle Seed	MorCorn4670	34.3	34.3	58.1	215.7
Triangle Seed	MorCorn4725VT2P	34.3	34.3	58.1	228.5
Mean		33.6	33.4	57.6	218.3
Least Significant Difference (LSD)		2.9	2.9	0.9	Not Significant
P-value		0.06	0.04	<0.001	0.29

Note: Harvest sample size was 1/1000th of an acre and was hand harvested.

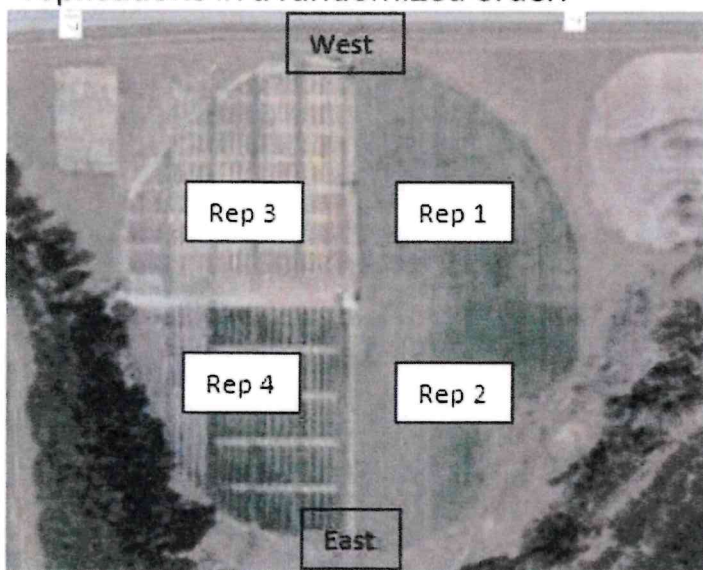
2022 NFREC-SV BMP

Grain Corn Variety Trial

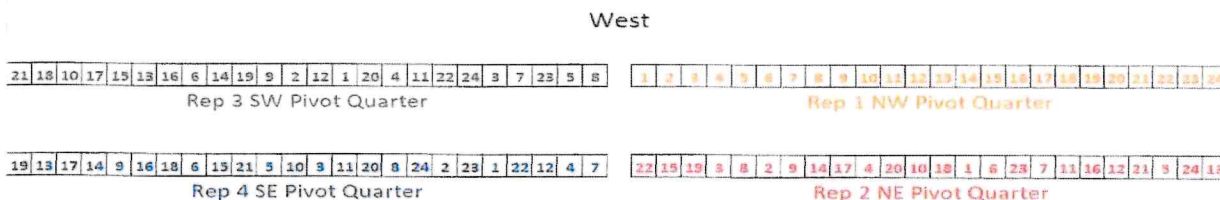
Keith Wynn, UF/IFAS Hamilton County Extension, Emily Beach UF/IFAS Lafayette County Extension, Nicholas Dufault UF/IFAS Plant Pathologist, Kevin Korus UF/IFAS Alachua County Extension, Ben Broughton, North Florida Research and Education Center-SV Farm Manager, Joel Love, UF/IFAS BMP Outreach/Education Specialist

Purpose and Scope

Each year there is a daunting task for producers to select a variety that will offer the most productive yields under normal conditions in the Suwannee Valley region of North Florida. This trial includes 24 varieties from 12 seed corn companies and each treatment was planted at a population of 30,000 seeds/acre. The trial included 4 replications in a randomized order.



Company	Treatment #	Variety #
Agratech	1	711VT2P
Agratech	2	888VT2P
Agrigold	3	A643-52VT2PRO
Agrigold	4	A6659VT2PRO
Integra	5	6342TRE
Integra	6	6410SS
Croplan	7	CP5678VT2PCPF2
Croplan	8	CP5588VT2PCPR2
Dekalb	9	DKC68-95
Dekalb	10	DKC68-69
Dyna-Gro	11	D58SS65
Dyna-Gro	12	D57VC51
Gateway Seed	13	1719VT2PRO
Gateway Seed	14	9714VT2PRO
Local Seed	15	LC1307TC
Local Seed	16	LC1898TC
NK	17	NK1748-3110
NK	18	NK1838-3110
Pioneer	19	P2042VYHR
Pioneer	20	P1289YHR
Seedway	21	SW1600VT
Seedway	22	SW1579SSCRIB
Triangle Seed	23	MC4725VT2P
Triangle Seed	24	MC4311TRE



2022 NFREC-SV

BMP Grain Corn Variety Trial

Treatment List

Prior to planting, these plots were planted in oat cover crop that was burned down with Gramoxone. Plot areas were strip-tilled the day before planting on April 11 and April 12, 2022 and the harvest dates were August 29-31, 2022.

Fertility:

23-9-0 liquid starter at 12 gallons/acre plus Orangeburg Supra-Starter
Micronutrient blend applied 2 X 2 at planting

9-7-21 dry blend at 700 lbs/acre banded on both sides applied on 5-18-22

1st y-drop application of 28-0-0-5 at 27 gallons/acre on 5-26-22

2nd y-drop application of 28-0-0-5 at 27 gallons/acre on 6-10-22

***Note:** The following AgXplore products were used in starter, side dress, and foliar applications: Contain MAX (Nitrogen management aid), NutraK (foliar Potassium source), OnWard (plant growth regulator), XR5 Sulfur (Sulfur source), Octane (Carbohydrate source), BorPak (Boron source), Inferno (Humic/Fulvic), and AGX 22011 (micronutrient blend source).

Pesticide/Herbicide:

Counter in furrow at 5.4 lbs/acre at planting

Atrazine at 32 oz/acre and Moccasin at 16 oz/acre applied on 4-13-22

Atrazine at 32 oz/acre and Moccasin at 16 oz/acre applied on 5-6-22

Approach Prima at 6.8 oz/acre was applied via highboy on 6-8-22

Irrigation:

4.83" has been applied through pivot irrigation since 4-13-22

Total Fertilizer Usage

Nitrogen: 256 lbs/acre

Phosphorus: 61 lbs/acre

Potassium: 150 lbs/acre

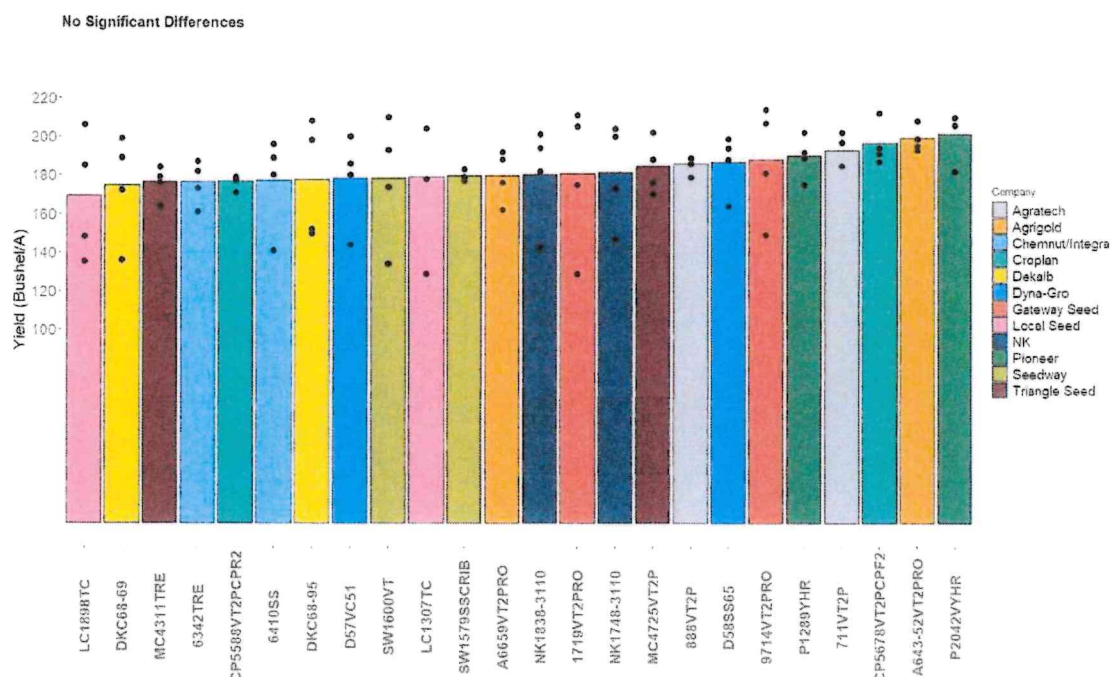
Sulfur: 77 lbs/acre

Magnesium: 22 lbs/acre

Boron: 1 lb/acre

NFREC-SV BMP Grain Corn Variety Trial

2022 Results



Company	Variety	bu/A	Min	Max
Pioneer	P2042VYHR	201.6	182.5	210.5
Agrigold	A643-52VT2PRO	199.2	193.8	208.0
Croplan	CP5678VT2PCPF2	196.6	187.8	212.2
Agratech	711VT2P	192.9	185.4	202.9
Pioneer	P1289YHR	190.1	175.4	202.1
Gateway Seed	9714VT2PRO	188.1	149.5	214.1
Dyna-Gro	D58SS65	186.7	164.9	199.2
Agratech	888VT2P	186.1	179.1	189.5
Triangle Seed	MC4725VT2P	184.7	170.9	202.7
NK	NK1748-3110	181.4	147.7	204.6
Gateway Seed	1719VT2PRO	180.7	129.8	211.8
NK	NK1838-3110	180.5	143.2	201.7
Agrigold	A6659VT2PRO	179.8	162.3	192.4
Seedway	SW1579SSCRIB	179.8	177.4	183.4
Local Seed	LC1307TC	179.1	129.1	204.7
Seedway	SW1600VT	178.3	134.1	210.3
Dyna-Gro	D57VC51	178.1	144.6	200.5
Dekalb	DKC68-95	177.4	150.1	208.2
Chemnut/Integra	6410SS	177.0	142.0	196.3
Croplan	CP5588VT2PCPR2	176.7	171.3	179.3
Chemnut/Integra	6342TRE	176.5	161.8	187.5
Triangle Seed	MC4311TRE	176.3	164.4	184.4
Dekalb	DKC68-69	174.7	136.8	199.3
Local Seed	LC1898TC	169.0	135.6	206.7
Pvalue		0.59		

Note: Due to replication effects, there were no significant differences in yields.

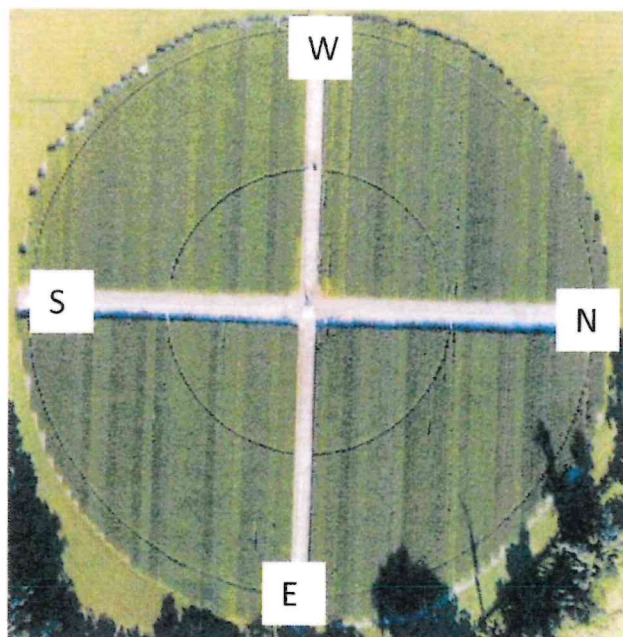
2023 NFREC-SV BMP

Grain Corn Variety Trial

Keith Wynn, UF/IFAS Hamilton County Extension, Emily Beach UF/IFAS Lafayette County Extension, Nicholas Dufault UF/IFAS Plant Pathologist, Kevin Korus UF/IFAS Alachua County Extension, Ben Broughton, North Florida Research and Education Center-SV Farm Manager, Joel Love, UF/IFAS BMP Outreach/Education Specialist

Purpose and Scope

Each year there is a daunting task for producers to select a variety that will offer the most productive yields under normal conditions in the Suwannee Valley region of North Florida. This trial includes 18 varieties from 9 seed corn companies and each treatment was planted at a population of 32,000 seeds/acre. The trial included 4 replications in a randomized order.



1	2	3	4	5	6	7	8	9	10	11	12	13	14	15	16	17	18
---	---	---	---	---	---	---	---	---	----	----	----	----	----	----	----	----	----

Rep 1 SW Pivot Quarter

16	6	10	7	8	15	17	13	11	5	1	3	12	2	14	4	18	9
----	---	----	---	---	----	----	----	----	---	---	---	----	---	----	---	----	---

Rep 3 SE Pivot Quarter

Treatment #	Company	Variety #
1	Agratech	708VIP
2	Agratech	711VT2P
3	Agrigold	A643-52VT2PRO
4	Agrigold	A6659VT2RIB
5	Croplan	CP5678SS
6	Croplan	CP5893TRE
7	Dekalb	DKC70-45RIB
8	Dekalb	DKC68-35VT2P
9	Dyna-Gro	D58SS65
10	Dyna-Gro	D57VC51
11	Integra	6342TRE
12	Integra	6641SS
13	NK	NK1677-3110
14	NK	NK1755-DV
15	Pioneer	P1622VYHR
16	Pioneer	P1289YHR
17	Revere	1627TC
18	Revere	1577VT2P

10	2	5	13	4	18	17	3	7	16	1	6	11	14	8	9	12	15
----	---	---	----	---	----	----	---	---	----	---	---	----	----	---	---	----	----

Rep 2 NW Pivot Quarter

6	2	13	9	17	12	4	14	11	8	18	7	10	15	1	5	16	3
---	---	----	---	----	----	---	----	----	---	----	---	----	----	---	---	----	---

Rep 4 NE Pivot Quarter

2023 NFREC-SV

BMP Grain Corn Variety Trial

Treatment List

Prior to planting, these plots were planted in a multi-species blend cover crop that was terminated the first week of March with Glyphosate and 2, 4-D Amine. Plot areas were strip-tilled the day before planting, on March 29. It was planted on March 30-31 and harvested on August 18-22.

Fertility:

5-7-28 Mosaic Micro-essentials S-10/Aspire blend with minors at 206 lbs/acre,
8 inches under row with KMC strip till unit and First Products applicator
23-9-0 liquid starter at 12 gallons/acre plus Orangeburg Supra-Starter
Micronutrient blend applied 2 X 2 at planting
17-0-21 dry blend at 700 lbs/acre banded on both sides applied on 4-27-23
28-0-0-5 fertigation at 10 gallons/acre on 5-15-23
28-0-0-5 fertigation at 10 gallons/acre on 5-25-23
28-0-0-5 fertigation at 10 gallons/acre on 5-30-23

***Note:** The following AgXplore products were used in starter, side dress, and foliar applications: Contain MAX (Nitrogen management aid), NutraK (foliar Potassium source), OnWard (plant growthregulator), XR5 Sulfur (Sulfur source), Octane (Carbohydrate source), BorPak (Boron source), Inferno (Humic/Fulvic), and AGX 22011 (micronutrient blend source).

Pesticide/Herbicide:

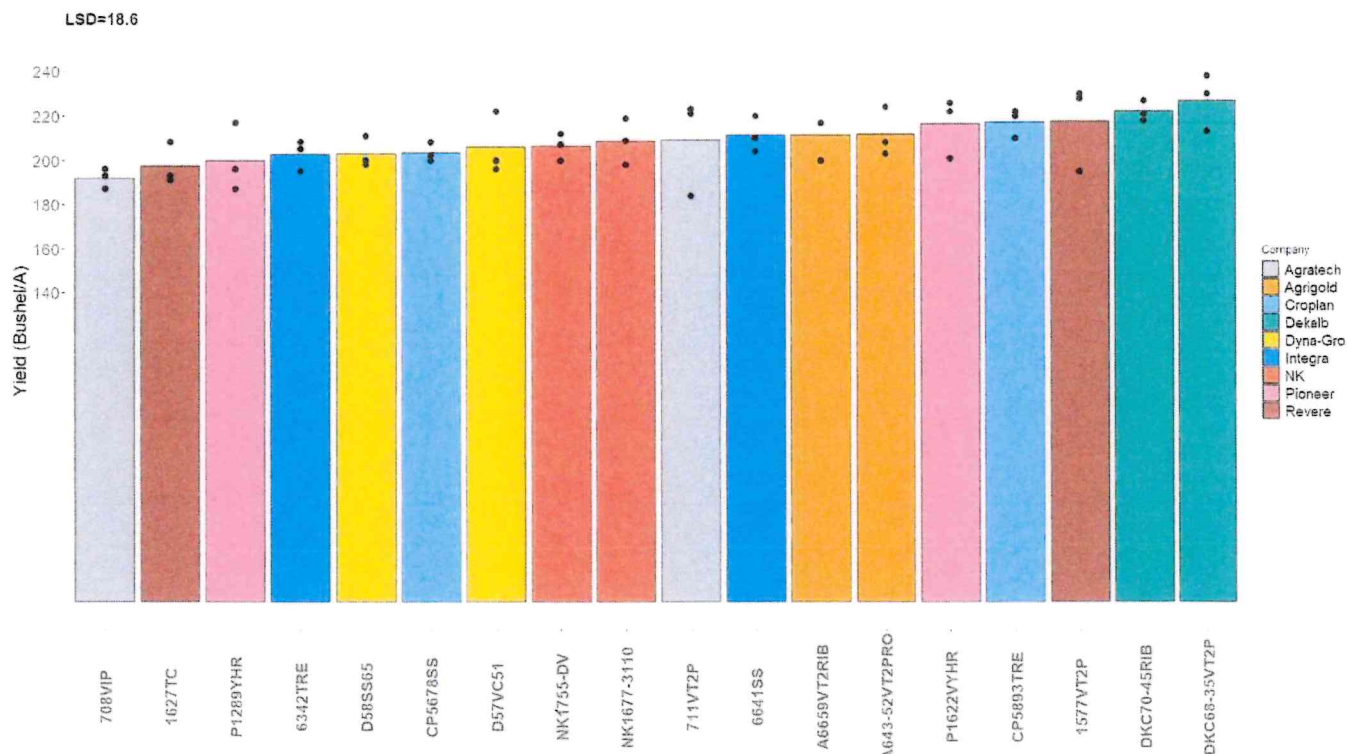
Counter in furrow at 5.4 lbs/acre at planting
Gramoxone, Dual 2 and Atrazine applied on 4-1-23
Glyphosate, Prowl and Atrazine applied on 4-26-23
Approach Prima at 6.8 oz/acre was applied via highboy on 6-16-23

Total Fertilizer Usage

Nitrogen: 261 lbs/acre	Sulfur: 82 lbs/acre
Phosphorus: 26 lbs/acre	Magnesium: 11 lbs/acre
Potassium: 190 lbs/acre	Boron: 2 lb/acre

2023 NFREC-SV

BMP Grain Corn Variety Trial Results



Company	Variety	Mean	Group
Dekalb	DKC68-35VT2P	227	a
Dekalb	DKC70-45RIB	222	ab
Revere	1577VT2P	218	abc
Croplan	CP5893TRE	217	abc
Pioneer	P1622VYHR	216	abc
Agrigold	A643-52VT2PRO	212	abcd
Agrigold	A6659VT2RIB	211	abcd
Integra	6641SS	211	abcd
Agratech	711VT2P	209	abcde
NK	NK1677-3110	209	abcde
NK	NK1755-DV	206	bcde
Dyna-Gro	D57VC51	206	bcde
Croplan	CP5678SS	203	cde
Dyna-Gro	D58SS65	203	cde
Integra	6342TRE	203	cde
Pioneer	P1289YHR	200	cde
Revere	1627TC	197	de
Agratech	708VIP	192	e

2024 NFREC-SV BMP

Grain Corn Variety Trial

Keith Wynn, UF/IFAS Hamilton County Extension; Emily Beach UF/IFAS Lafayette County Extension; Nicholas Dufault, UF/IFAS Plant Pathologist; Kevin Korus UF/IFAS Alachua County Extension; Anthony Crain, North Florida Research and Education Center-SV Farm Manager; Joel Love, UF/IFAS BMP Outreach/Education Specialist; Shivendra Kumar, UF/IFAS Regional Specialized Agent, Agronomic Crops

Purpose and Scope

Each year there is a daunting task for producers to select a variety that will offer the most productive yields under normal conditions in the Suwannee Valley region of North Florida. This trial includes 18 varieties from 9 seed corn companies and each treatment was planted at a population of 30,000 seeds/acre. The trial included 4 replications in a randomized order.



Treatment #	Company Name	Variety #
1	Agratech	704VT2P
2	Agratech	85VT2P
3	BH Genetics	BH8721VT2P
4	BH Genetics	BH8939TRE
5	Croplan	CP5760SS
6	Croplan	CP5893TRE
7	Dekalb	DKC70-45RIB
8	Dekalb	DKC68-35VT2P
9	Dyna-Gro	D58SS65
10	Dyna-Gro	D57VC51
11	Buffer	
12	Buffer	
13	Integra	6915TRE
14	Integra	6641SS
15	NK	NK1677-3110
16	NK	NK1830-3110
17	Pioneer	P17677VHR
18	Pioneer	P1289YHR
19	Revere	RV1839
20	Revere	RV1577

West

1 2 3 4 5 6 7 8 9 10 11 12 13 14 15 16 17 18 19 20

Rep 1 SW Pivot Quarter

4 18 1 19 16 5 9 7 2 8 13 17 6 15 3 12 20 11 10 14

Rep 2 NW Pivot Quarter

18 6 17 1 4 20 5 14 10 8 9 16 11 3 13 12 19 7 15 2

Rep 3 SE Pivot Quarter

8 16 12 17 10 2 3 11 7 15 18 20 6 13 4 19 9 14 1 5

Rep 4 NE Pivot Quarter

East

2024 NFREC-SV

BMP Grain Corn Variety Trial

Treatment List

Prior to planting, these plots were planted in a multi-species blend cover crop that was terminated the end of March with Glyphosate and 2, 4-D Amine. Plot areas were strip-tilled the day before planting, on April 9. It was planted on April 10 and was harvested on August 20, 2024.

Fertility:

1-8-14 dry blend, with minors at 320 lbs/acre, banded 8 inches on each side of the row with KMC strip till unit, First Products applicator on 4/9/24.

28-0-0-5 liquid starter at 15 gallons/acre banded 3 inches on each side of the row on 4/10/24.

14-0-22 dry blend at 673 lbs/acre banded on both sides of row with First Products unit on 5/17/24.

28-0-0-5 fertigation at 10 gallons/acre on 5/21/24.

23-9-0-5 fertigation at 20 gallons/acre on 6/04/24.

23-9-0-5 fertigation at 5 gallons/acre on 6/25/24.

Note: Other products applied at planting were AgXplore Contain Advanced (Nitrogen management product), AgXplore MicroScience (secondary and micro plant nutrients package), AgXplore N-Ferno (humic to stimulate microbial activity), and GSI Vermicompost tea (promotes diverse microbial growth).

Pesticide/Herbicide:

Gramoxone, Dual 2, and Atrazine applied on 4/16/24.

Dual 2 and Atrazine applied on 4/29/24.

Irrigation:

BMP Logic Soil Moisture Probe for soil moisture monitoring.

8.51 inches of irrigation.

32.03 inches of rainfall.

Target Fertilizer Usage

Nitrogen: 233 lbs/acre

Phosphorus: 50 lbs/acre

Potassium: 193 lbs/acre

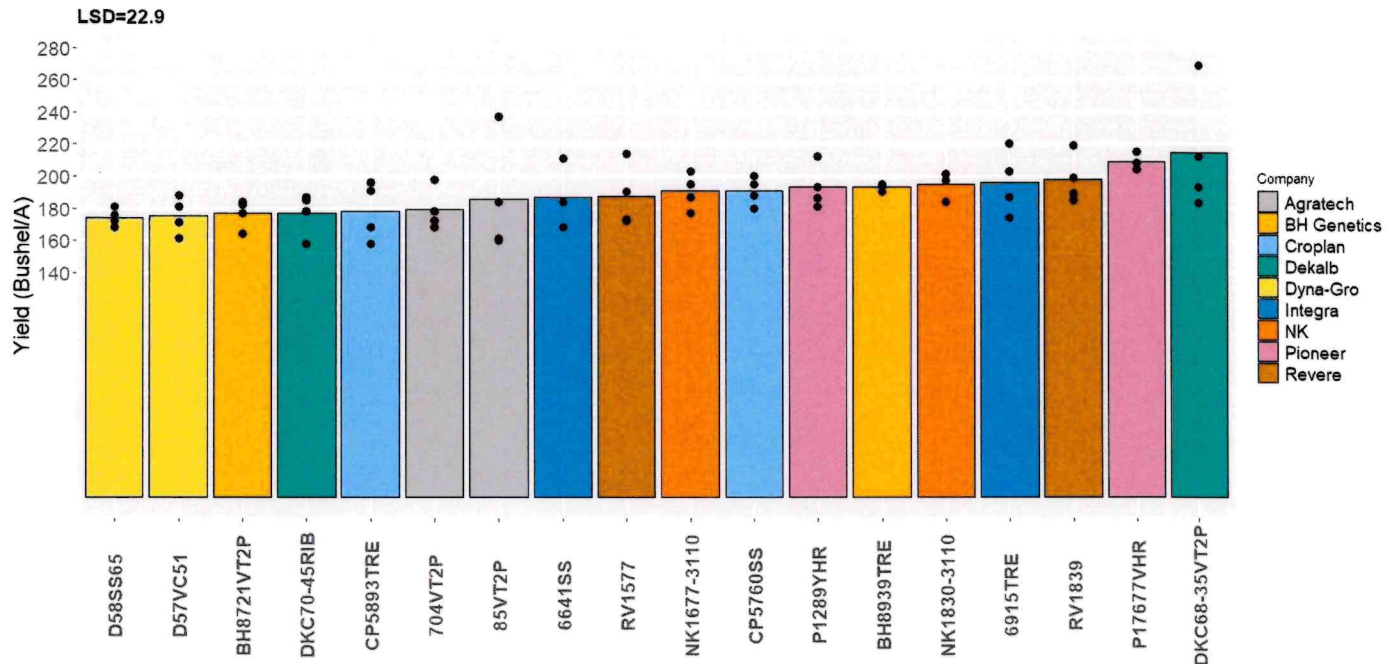
Sulfur: 60 lbs/acre

Magnesium: 22 lbs/acre

Boron: 2 lb/acre

2024 NFREC-SV

BMP Grain Corn Variety Trial Results



Company	Variety	BushelPerAcre	LSD Group
Dekalb	DKC68-35VT2P	214	d
Pioneer	P17677VHR	209	cd
Revere	RV1839	198	bcd
Integra	6915TRE	196	abcd
NK	NK1830-3110	195	abcd
BH Genetics	BH8939TRE	193	abcd
Pioneer	P1289YHR	193	abcd
Croplan	CP5760SS	191	abc
NK	NK1677-3110	191	abc
Revere	RV1577	187	abc
Integra	6641SS	187	abc
Agratech	85VT2P	186	ab
Agratech	704VT2P	179	ab
Croplan	CP5893TRE	178	ab
Dekalb	DKC70-45RIB	177	ab
BH Genetics	BH8721VT2P	177	ab
Dyna-Gro	D57VC51	175	ab
Dyna-Gro	D58SS65	174	a