

# South Carolina Home Horticulture Foundations

## Programming for South Carolina's New Gardeners

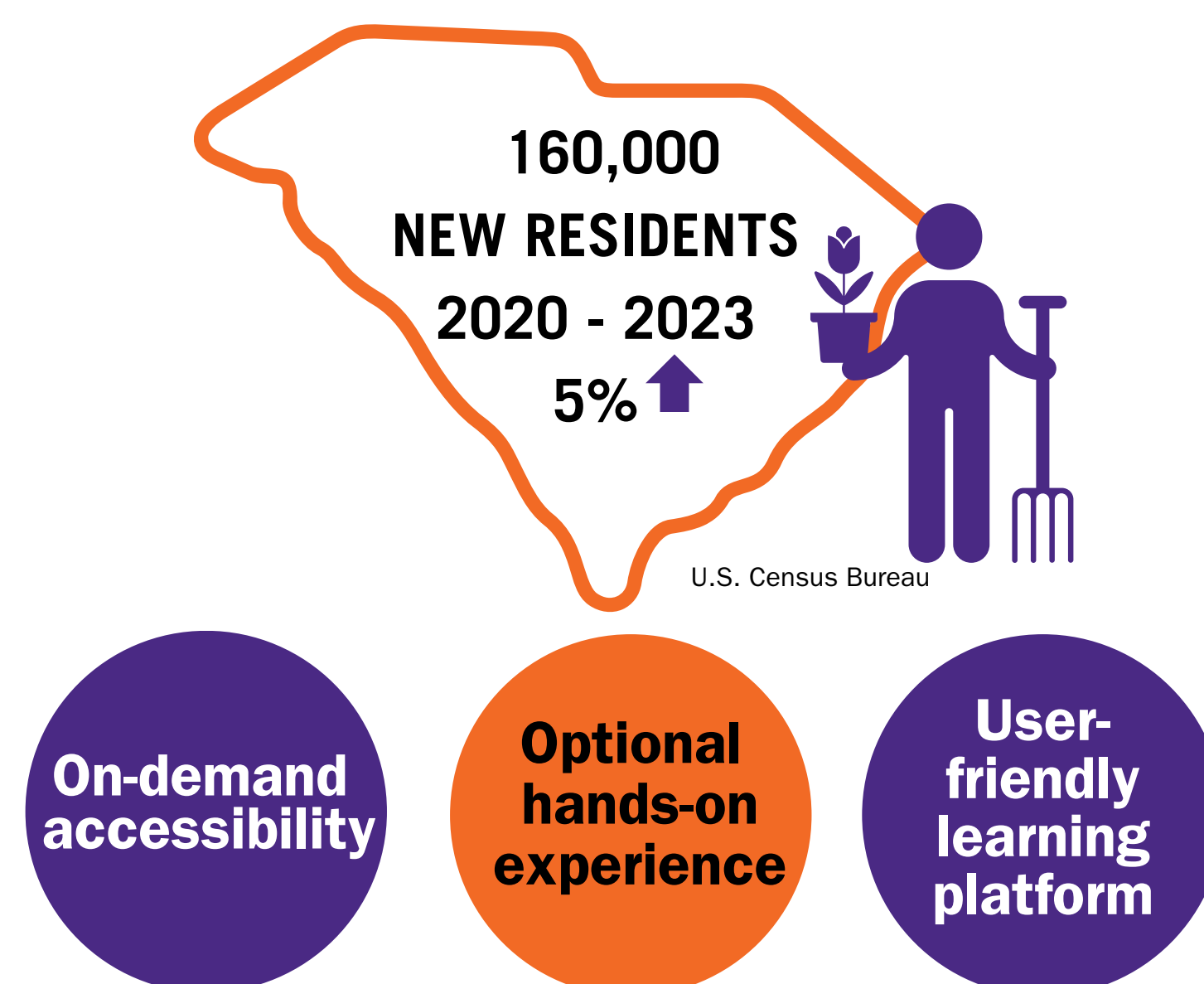
B. Fowler<sup>1</sup>, C. Ketron<sup>2</sup>, S. Turner<sup>3</sup>, C. Burt<sup>4</sup>, V. Bertagnoli<sup>5</sup>

Clemson Cooperative Extension Service Agents, Clemson University: Georgetown County<sup>1</sup>, Darlington County<sup>2</sup>, Greenwood County<sup>3</sup>, Aiken County<sup>5</sup>, | Agrihood Director  
Carnes Crossroad – Monck's Corner, SC <sup>4</sup> | bfowler@clemson.edu<sup>1</sup>, cketron@clemson.edu<sup>2</sup>, stepht@clemson.edu<sup>3</sup>, cburt@gmail.com<sup>4</sup>, vbtag@clemson.edu<sup>5</sup>



### Program Goals

Home Horticulture Foundations provides accessible gardening education for South Carolina newcomers through online webinars and hands-on field days that teach southern gardening practices. This hybrid program serves as both a practical landscape management resource and a gateway to broader Extension services for residents unfamiliar with what Extension offers.



### Learning Objectives

By the end of the course, participants will be able to:

- Identify soil characteristics for healthy South Carolina landscapes
- Select appropriate plants for local growing conditions
- Apply basic pest management strategies
- Create simple landscape designs with weather-wise gardening considerations.

### Learning Modules

- Understanding Soil Basics
- Lawns & Weeds
- Integrated Pest Management
- Edible Gardens
- Plant Selection for the Southeast
- Landscape Design
- Weather-Wise Gardening

### Materials

Hybrid learning for the flexible experience:

- Live, evening webinars twice a week for four weeks
- Recording of webinars available for 2 months
- Curated digital resource guide
- (2) Optional field days
  - (1) Garden assessment kit per field day participant



Garden assessment kits included measuring cups, planting guides, magnifying loop, seed packets, notepad and pen.

### Field Days

Two optional field days were offered in addition to the live webinars providing:



Tool demonstrations, equipment calibration



Botanical garden tours, plant pest clinic.



Demonstrations of proper planting, irrigation, and plant maintenance

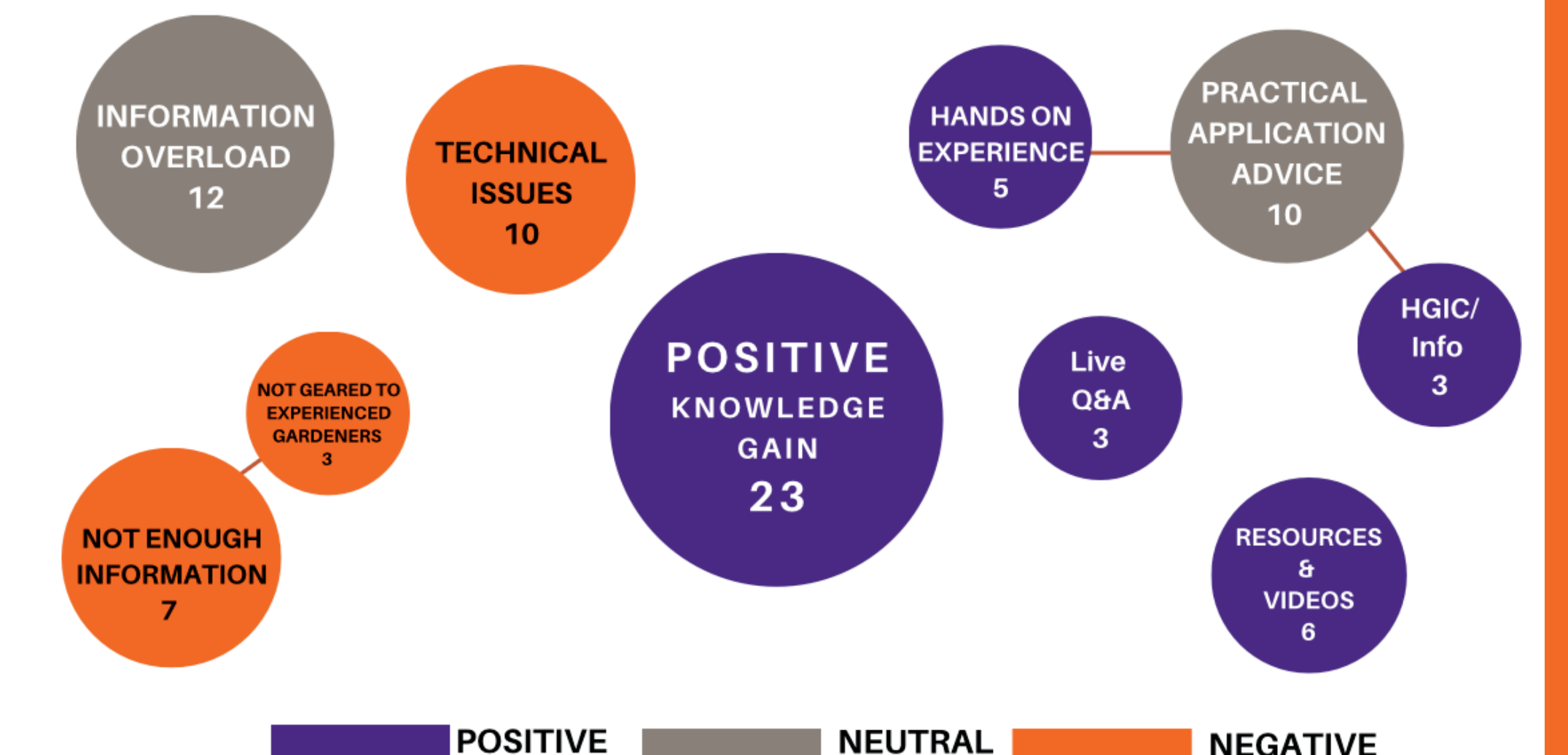
### Outcomes

- **41 participants** total
- 18 people participated in Field Days
- **89%** of participants watched all the modules, either live or recordings
- **\$2,500** in revenue for future courses

### Evaluation

**Post-module Qualtrics surveys with open-ended questions (n=105)** yielded qualitative feedback data that was thematically analyzed and visualized through bubble mapping, where bubble size represented the frequency of theme occurrence.

### Survey Results



#### Participants noted:

*"I hope more programs like this will be offered in the future. The online information and presentations were extremely convenient for someone who works full time and can't be available for an in-person lecture during the day, or drive to a classroom in the evening."*

*"This program was able to provide information on every aspect of home horticulture, including things most everyday gardeners don't think about beyond their own yard. Like gardening for the future."*

*"This was some of the best money I've ever spent. It has sparked more interest in planting, gardening, and lawn care. I have already implemented some things I've learned."*