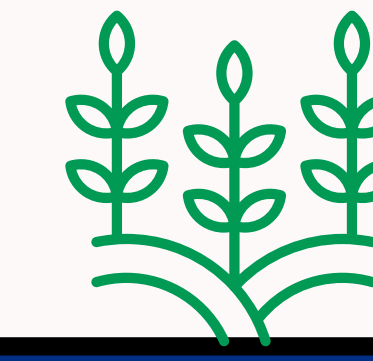
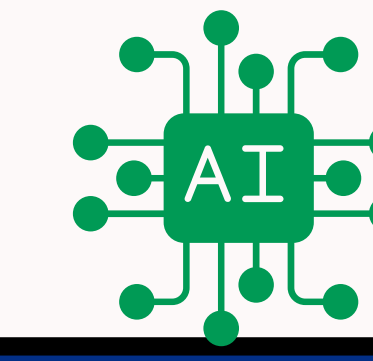
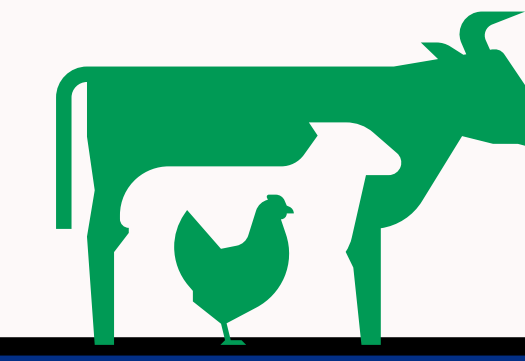


# MEETING COMMUNITY NEEDS BY EXPANDING AGRICULTURE WORKFORCE

Contact:  
mlward@ufl.edu

MARNIE WARD, TONI NOAKER, AND ALYSSA SCHORTINGHOUSE  
UF/IFAS EXTENSION CITRUS COUNTY



## SITUATION:

Citrus County agricultural producers identified the need for an event that connects youth with local agricultural careers to help strengthen and sustain the community's future workforce.



## WHAT WE DID:

- Connected youth with agricultural professionals
- Delivered fifteen concurrent, hands-on learning sessions
- Provided one-on-one interactions and resources for continued engagement



## PARTNERSHIPS:



- **Educational Partners:** Citrus County Schools (public & private), College of Central Florida, UF College of Agriculture (12)
- **Agricultural Organizations:** Agricultural Alliance of Citrus County, Florida Farm Bureau (7)
- **Industry & Trade Partners:** Farm Credit of Central Florida, Industry Professionals, Trade Groups (9)

## PROGRAM TAKE AWAY:

- 110 youth engaged in 6 hours of programming
- + \$10,000 in community donations and in-kind support
- 28 engaged community collaborators
- commitment for annual partnership



## RESPONSES:

- 100% school participation (public, private, homeschool students (110 school-age students))
- 64% (n=70) of students reported learning about a career they had not considered
- 25% (n=70) of students reported an interest in exploring agriculture careers further
- 75% (n=15) of school administrators/teachers reported the program aligned with career readiness

## IMPACT:

This agricultural career outreach strengthened Citrus County partnerships and connected youth with industry pathways, meeting its objective through increased student participation and educator support.



CITRUS COUNTY CHRONICLE



UF | IFAS Extension  
UNIVERSITY of FLORIDA

