

STOCKSMART™

A decision support tool for grazing management in a variable and changing world.



Join the StockSmart team for monthly meetups

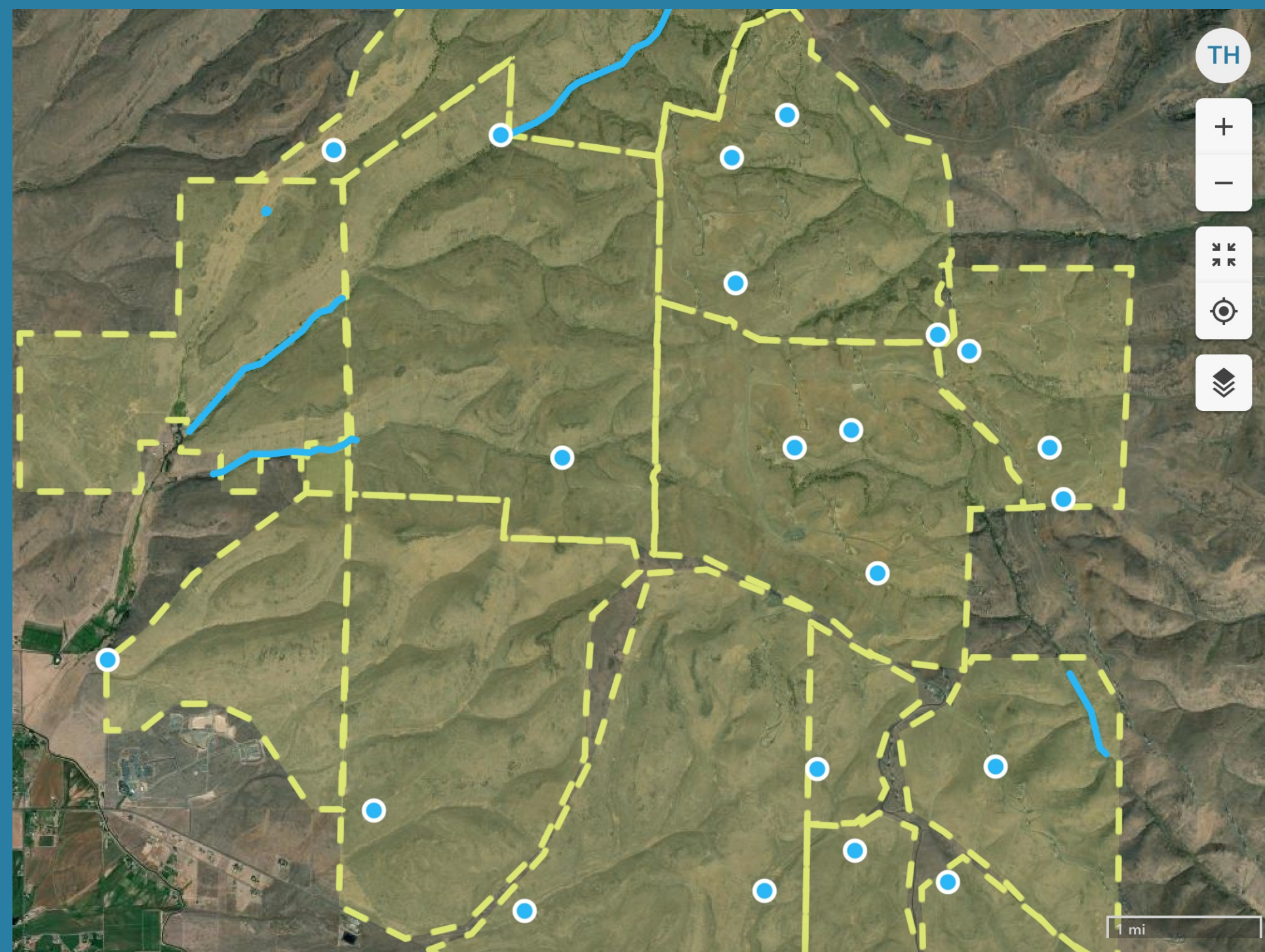
Calculate stocking rate ranges for large, heterogeneous landscapes based on spatially explicit and temporally dynamic remote-sensed rangeland above-ground net primary production data interacting with user-defined terrain use variables.

1. Identify pastures and stockwater locations

2. Set animal terrain use parameters

3. Calculate accessible forage and historical variability

STEPS

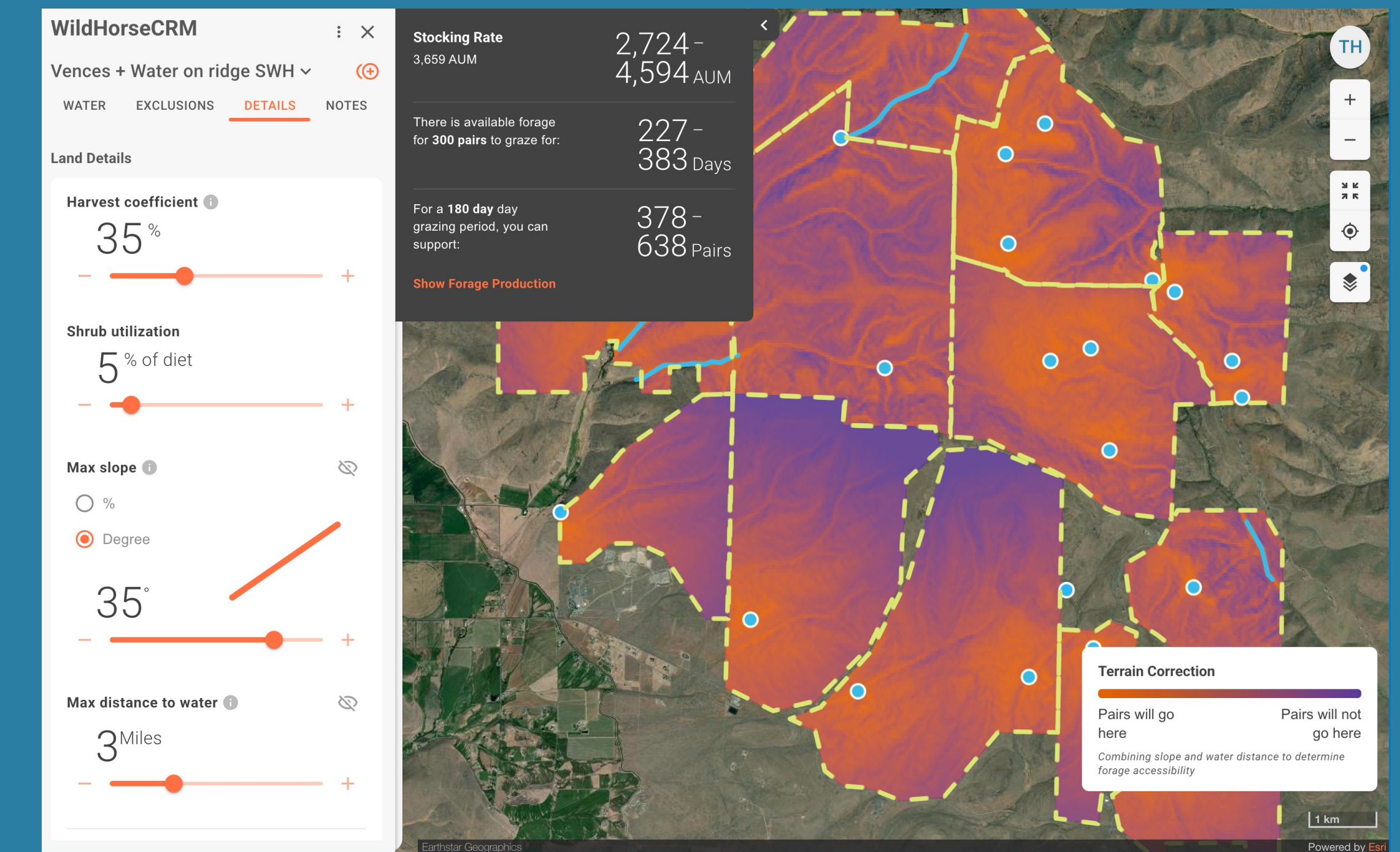
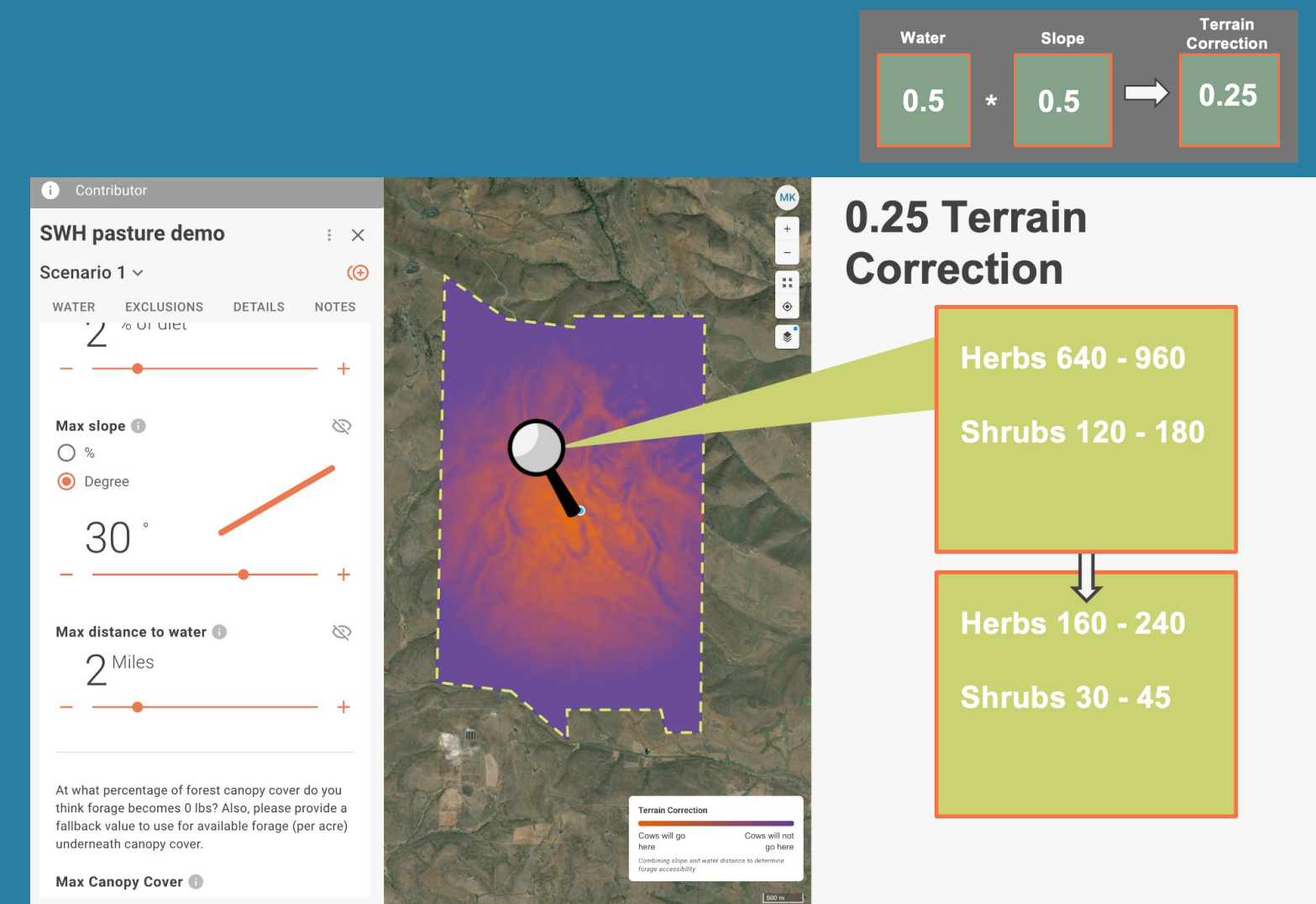
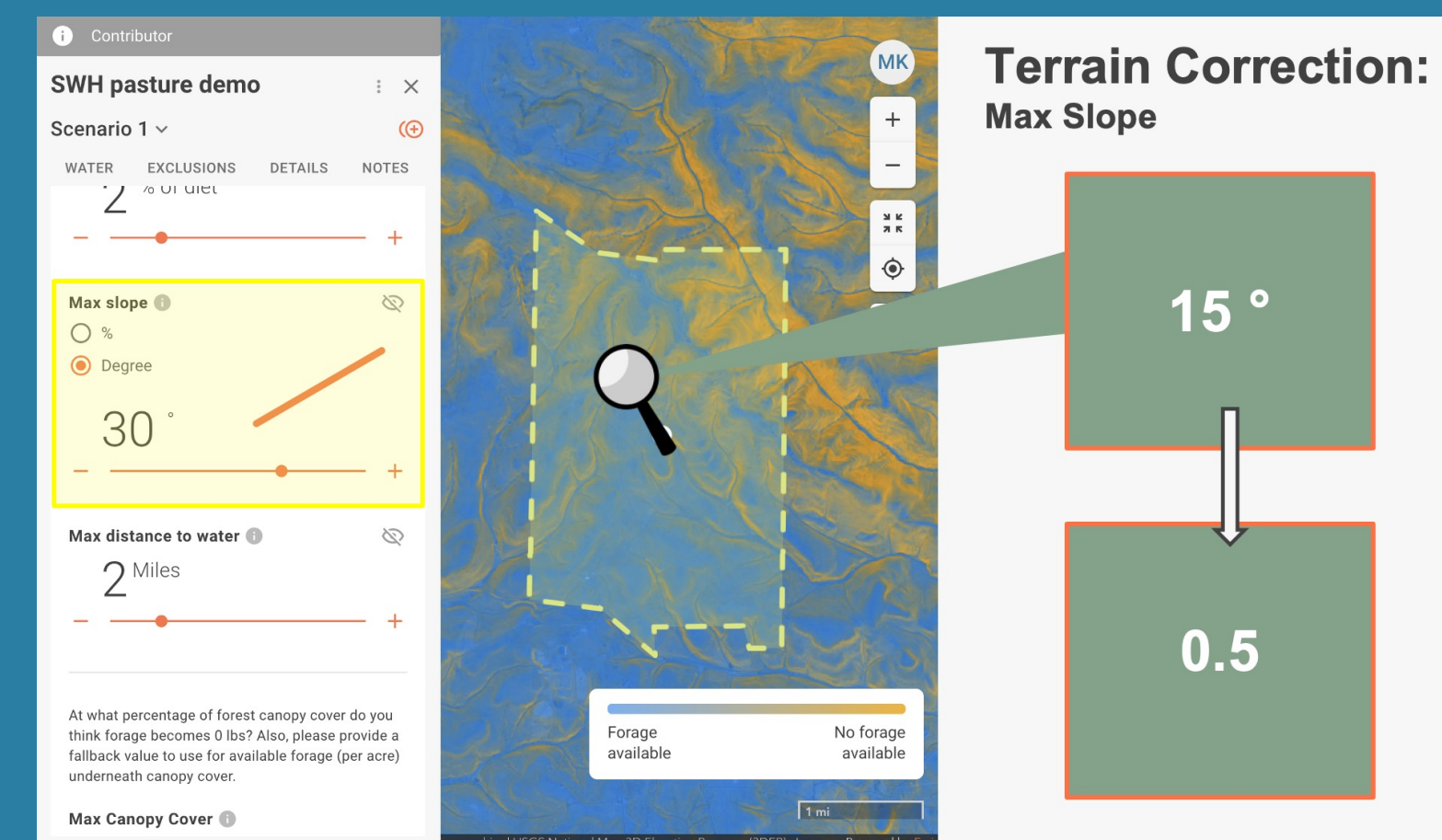
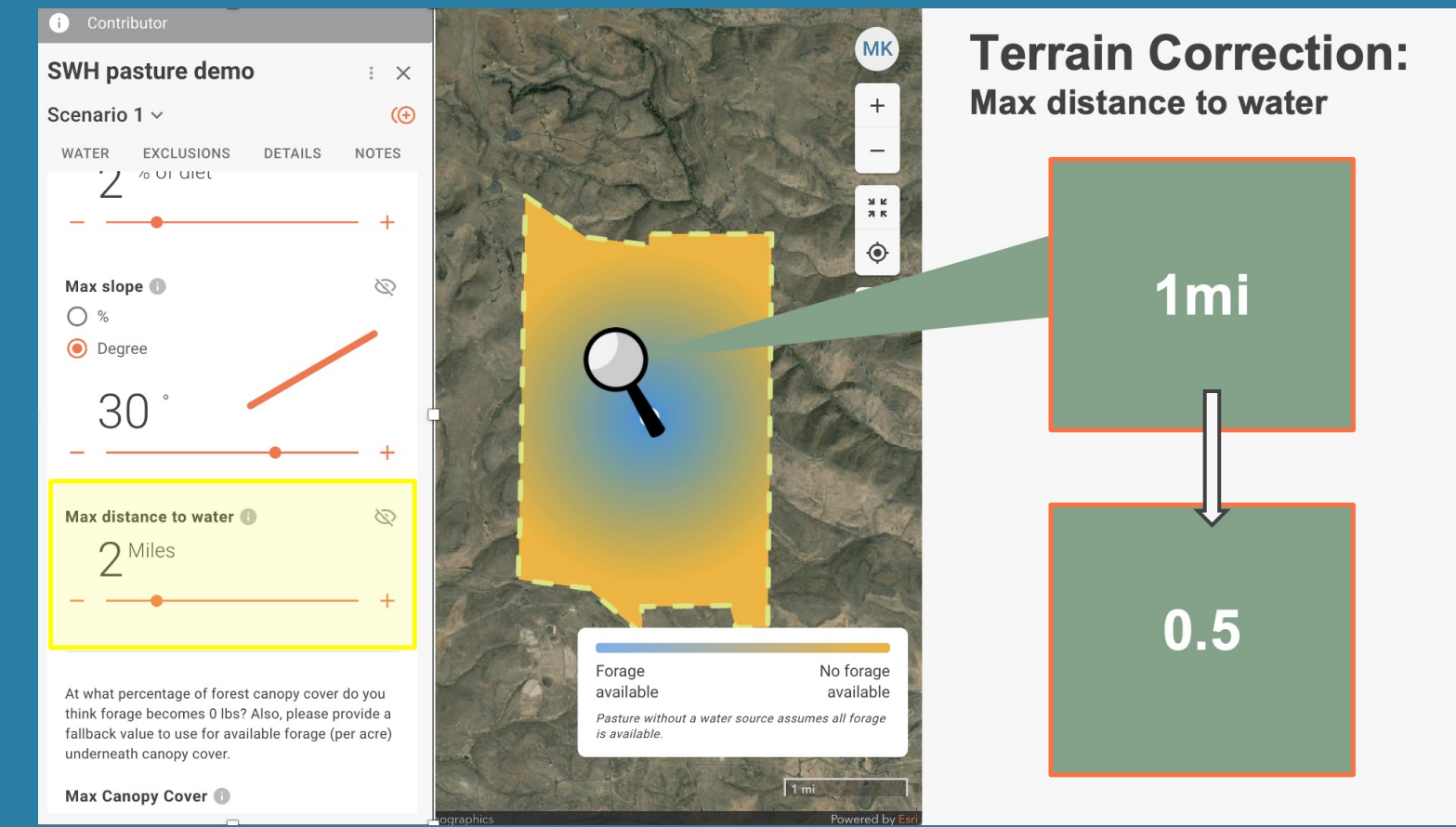


Rangeland herbaceous biomass (RPMS) x Vegetation fractional cover (Rangelands Analysis Platform)



Aboveground net primary production

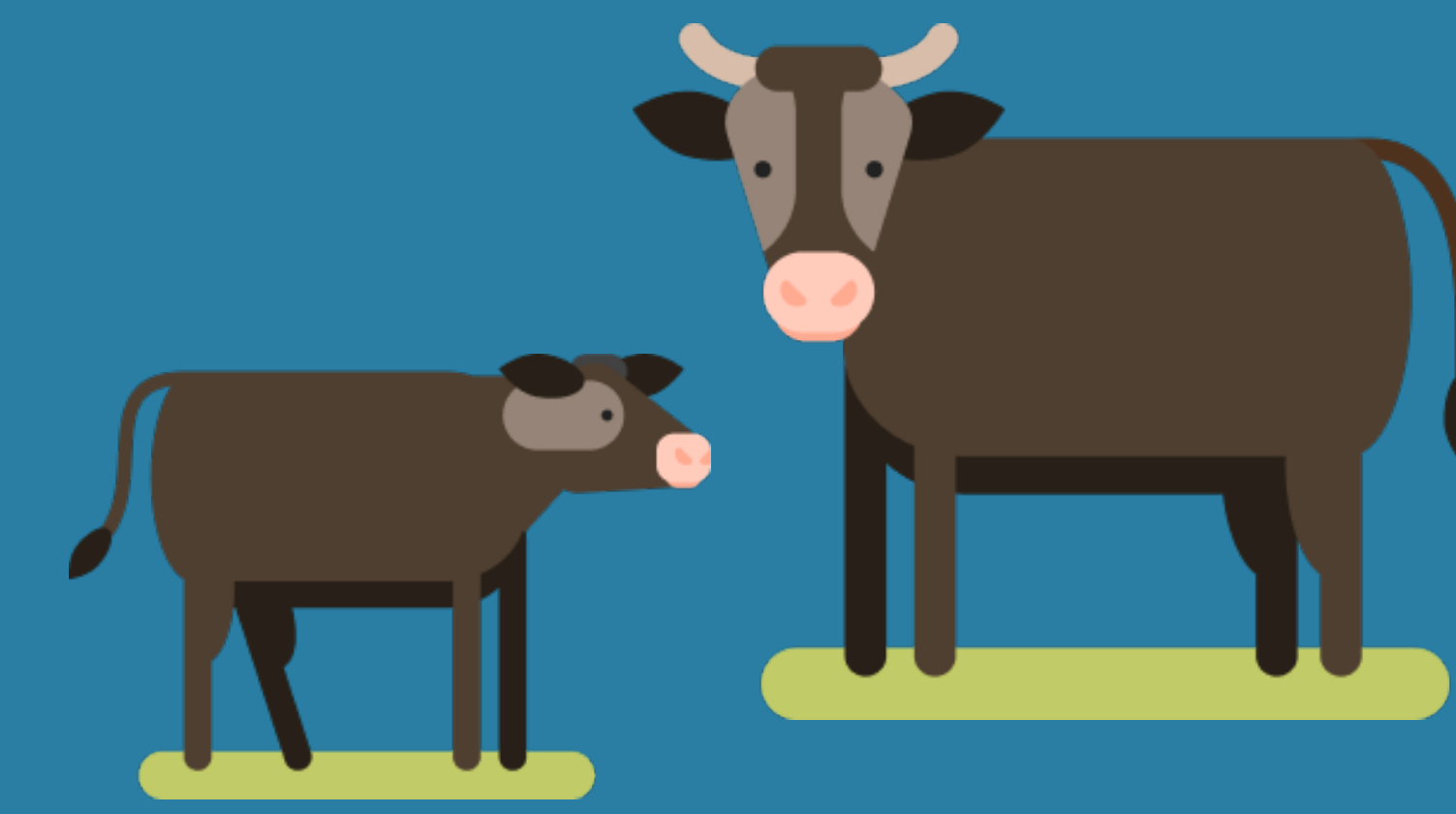
- Remotely sensed
- Spatially explicit
- Temporally dynamic



INPUTS

FEATURES

OUTPUTS



Stocking Rate	2,769 - 4,664 AUM
There is available forage for 300 pairs to graze for:	231 - 389 Days
For a 180 day grazing period, you can support:	385 - 648 Pairs
Hide Forage Production	
Total Area	22.04k Acres
Total Production	14.64M - 24.59M
Herbs	12.05M - 20.21M
Shrubs	2.47M - 4.15M
Trees	120.43k - 216.97k
Available Forage	2.16M - 3.64M
Herbs	2.14M - 3.60M
Shrubs	22.41k - 37.73k

REMOTE SENSED DATA

Data Sources

RPMS Data

Historical Mean

Historical Standard Deviation

VISUALIZE OPERATIONS

IMPORT OR DRAW SHAPES

Draw

Pasture, Water, Exclusion

CALCULATE STOCKING RATE

Success!

Stocking Rate: 3,852 - 6,446 AUM

321 - 537 Days

1,605 - 2,686 Cows

COMPARE SCENARIOS

Compare scenarios

Results Summary

Scenario	Total Acres	Total Production	Total Available Forage
Scenario 1	22.7k	27.86M - 45.84M	2.38M - 4.02M
Scenario 2	22.1	27.86M - 45.84M	2.38M - 4.02M

COLLABORATION

Project A, Project B, Project C, Project Y

USER ACCOUNT

Project A

Average cow weight: 1200 pounds

HOW-TO GUIDE

Get Started

Quick Demo

Try it out today at stock-smart.com



USEFUL REFERENCES: Open Access papers, links at <https://www.stock-smart.com/about-data>

- Hudson, T. D., Reeves, M. C., Hall, S. A., Yorgey, G. G., & Neibergs, J. S. (2021). Big landscapes meet big data: Informing grazing management in a variable and changing world. *Rangelands*, 43(1), 17–28. <https://doi.org/10.1016/j.raia.2020.10.006>
- Jones, M. O., Robinson, N. P., Naugle, D. E., Maestas, J. D., Reeves, M. C., Lankston, R. W., & Allred, B. W. (2021). Annual and 16-Day Rangeland Production Estimates for the Western United States. *Rangeland Ecology & Management*, 77, 112–117. <https://doi.org/10.1016/j.rama.2021.04.003>
- Reeves, M. C., Hanberry, B. B., Wilmer, H., Kaplan, N. E., & Lauenroth, W. K. (2021). An Assessment of Production Trends on the Great Plains from 1984 to 2017. *Rangeland Ecology & Management*, 78, 165–179. <https://doi.org/10.1016/j.rama.2020.01.011>
- Reeves, M. C., Swisher, J., Krebs, M., Warnke, K., Hanberry, B. B., Hudson, T., & Hall, S. A. (2025). Data-Driven Decision Support to Guide Sustainable Grazing Management. *Land*, 14(1), Article 1. <https://doi.org/10.3390/land14010140>

StockSmart team

Tipton D. Hudson, Washington State University Extension
 Sonia A. Hall, WSU Center for Sustaining Agriculture & Natural Resources
 Matthew C. Reeves, USDA Forest Service
 Matt King, University of Arizona Communications & Cybertechnologies
 Kim Daly, University of Arizona Communications & Cybertechnologies



Acknowledgements

StockSmart was developed by Washington State University and The University of Arizona. This development was supported by the intramural research program of the U.S. Department of Agriculture, National Institute of Food and Agriculture, accession number 1026404. Outreach is supported by the National Institute of Food and Agriculture, U.S. Department of Agriculture, under award number 2023-38640-39571 through the Western Sustainable Agriculture Research and Education program, project number 2023-07695. USDA is an equal opportunity employer and service provider. Any opinions, findings, conclusions, or recommendations expressed in these workshops are those of the team and do not necessarily reflect the view of the U.S. Department of Agriculture.