

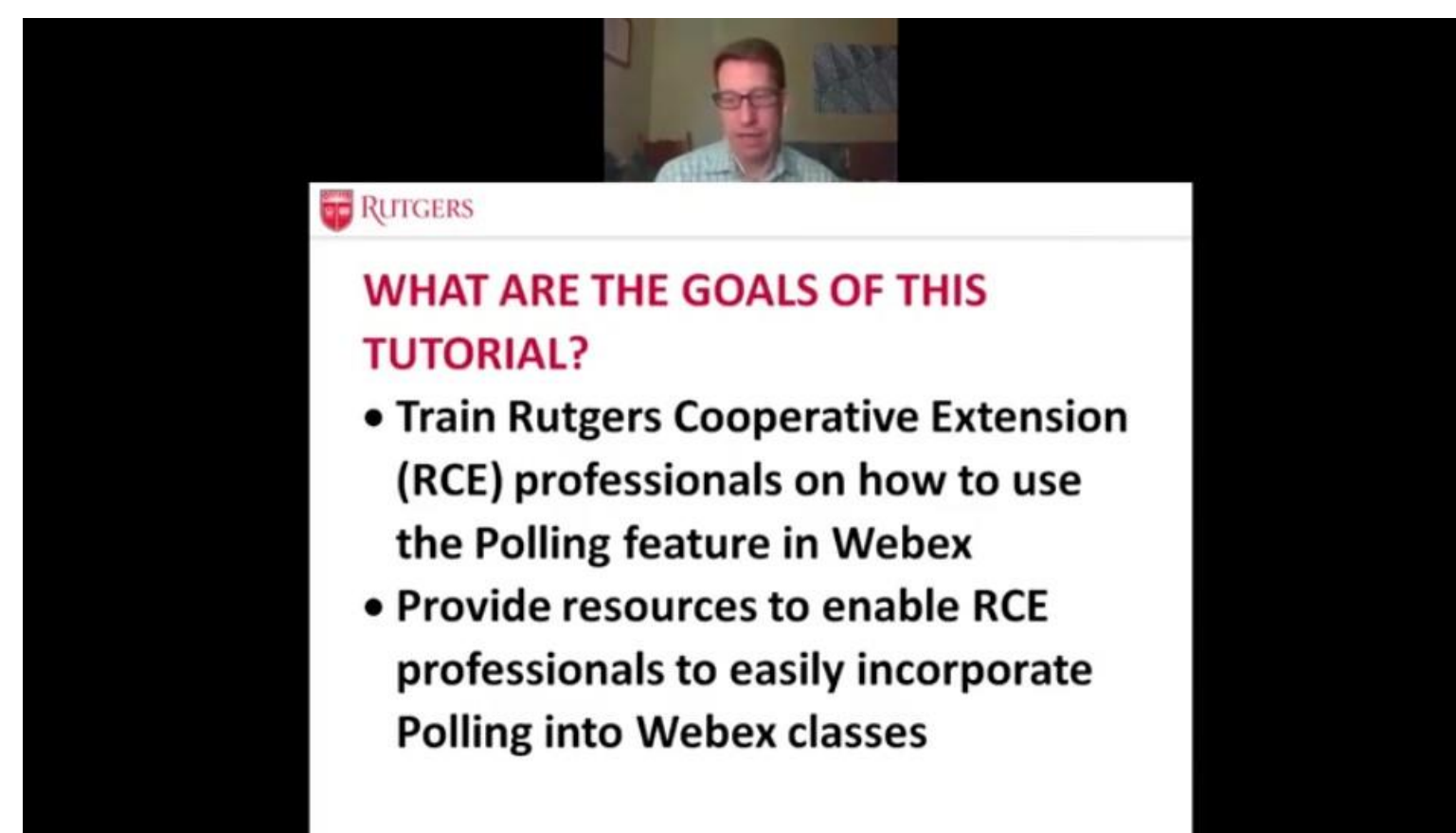
Introduction

The COVID-19 pandemic suspended in-person instruction within Rutgers Cooperative Extension (RCE), shifting programs to distance learning. The 'Webex Polling Tutorial' professional development webinar was developed and conducted to assist Extension professionals in performing online evaluations and the collection of impact data. The goals of the tutorial were to train RCE professionals in the use of the polling feature within Webex and provide them with resources to conduct online program evaluation.

Learning Objectives

The following learning objectives guided the design of the webinar:

- Participants will be able to describe the types of polls that can be conducted in Webex (program evaluation, demographic surveys, quizzes and tests, etc.).
- Participants will learn the different types of questions that can be used in Webex polls.
- Participants will be able to design and conduct various types of polls within Webex.



Methods

Webinar Design

The 'Webex Polling Tutorial' webinar was designed as a single 1-hour program covering the basics of how to conduct a poll in Webex, including poll creation, data collection, and poll result interpretation.

Resource materials developed for the webinar included:

- Scripted slide set entitled 'Webex Polling Tutorial'.
- Detailed step-by-step instruction sheet on how to create and manage a poll in Webex.
- Sample polls (as files in *.atp format) covering evaluation questions, demographic information, and knowledge tests from presenter's programming.

In addition, MP4 video recordings of the webinars were made available to all faculty and staff in RCE through email.

Survey Development & Implementation

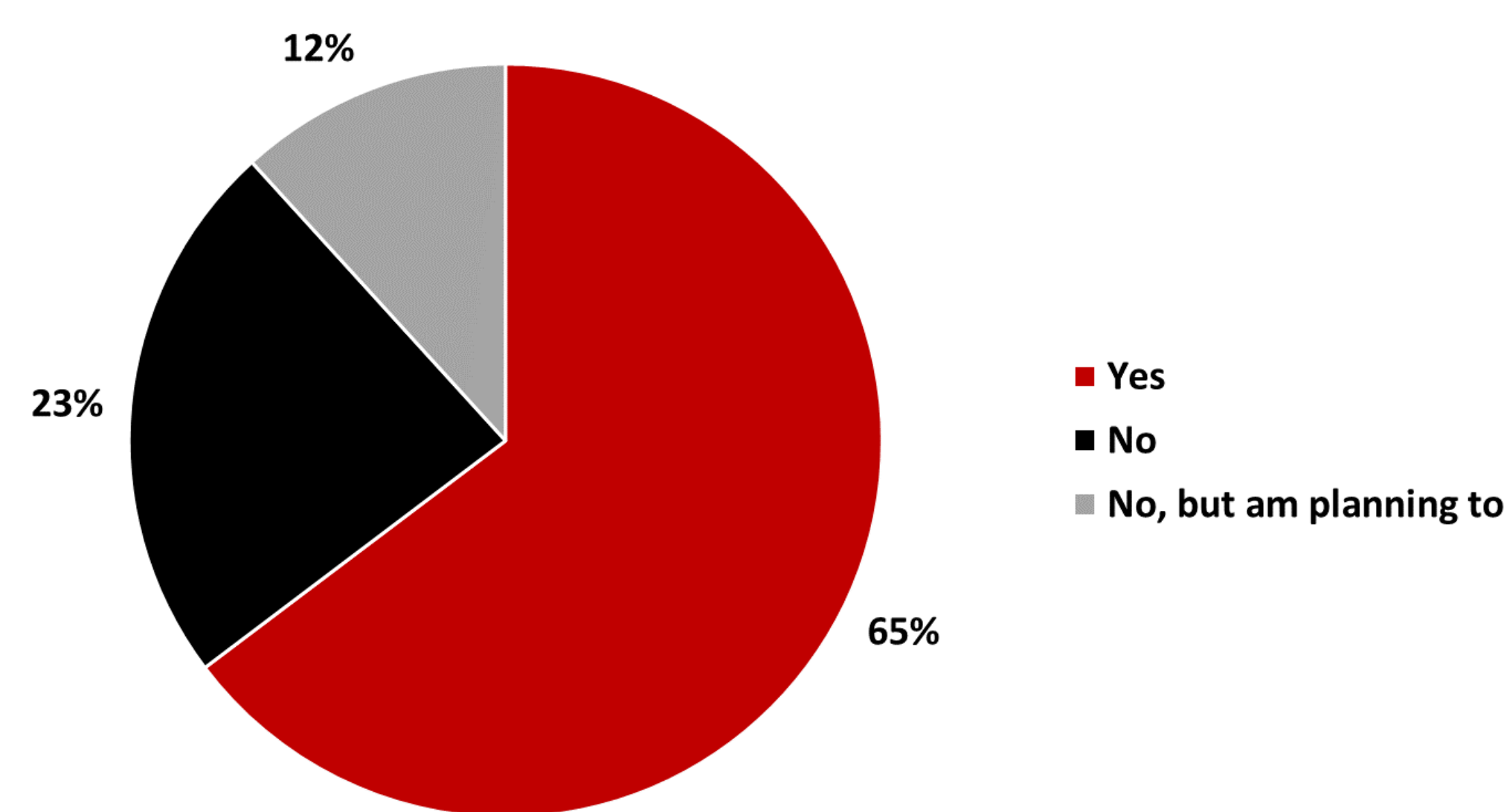
An electronic questionnaire was developed to collect information from faculty and staff within RCE to assess the usefulness of the training webinars. The survey was created in Qualtrics® and administered in June 2020 via electronic mail. This targeted individuals who participated in the live online webinars, who viewed a recording of the webinar, and who did both or neither.

Results

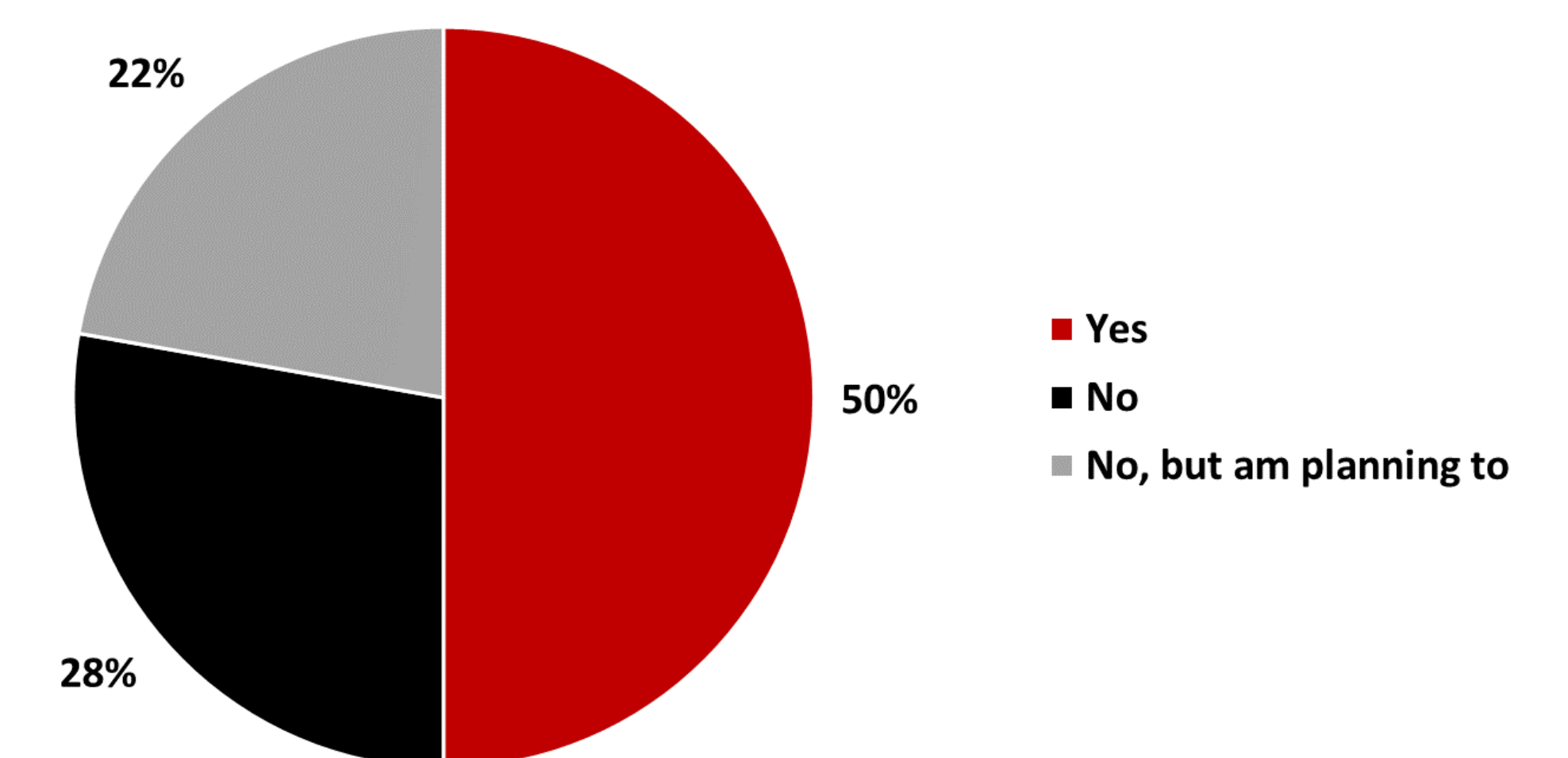
Two webinars were conducted in April 2020 to 24 participants. Access to the recordings and the survey were sent to all faculty and staff in RCE through its email list which contains approximately 295 members. Surveys were completed by 25 people (8.5% return rate from 295 email recipients). Most respondents (40%) came from the Agriculture and Natural Resources Department, while the second largest group of respondents were Extension Specialists (24%).

Survey results are shown in the following figures and table:

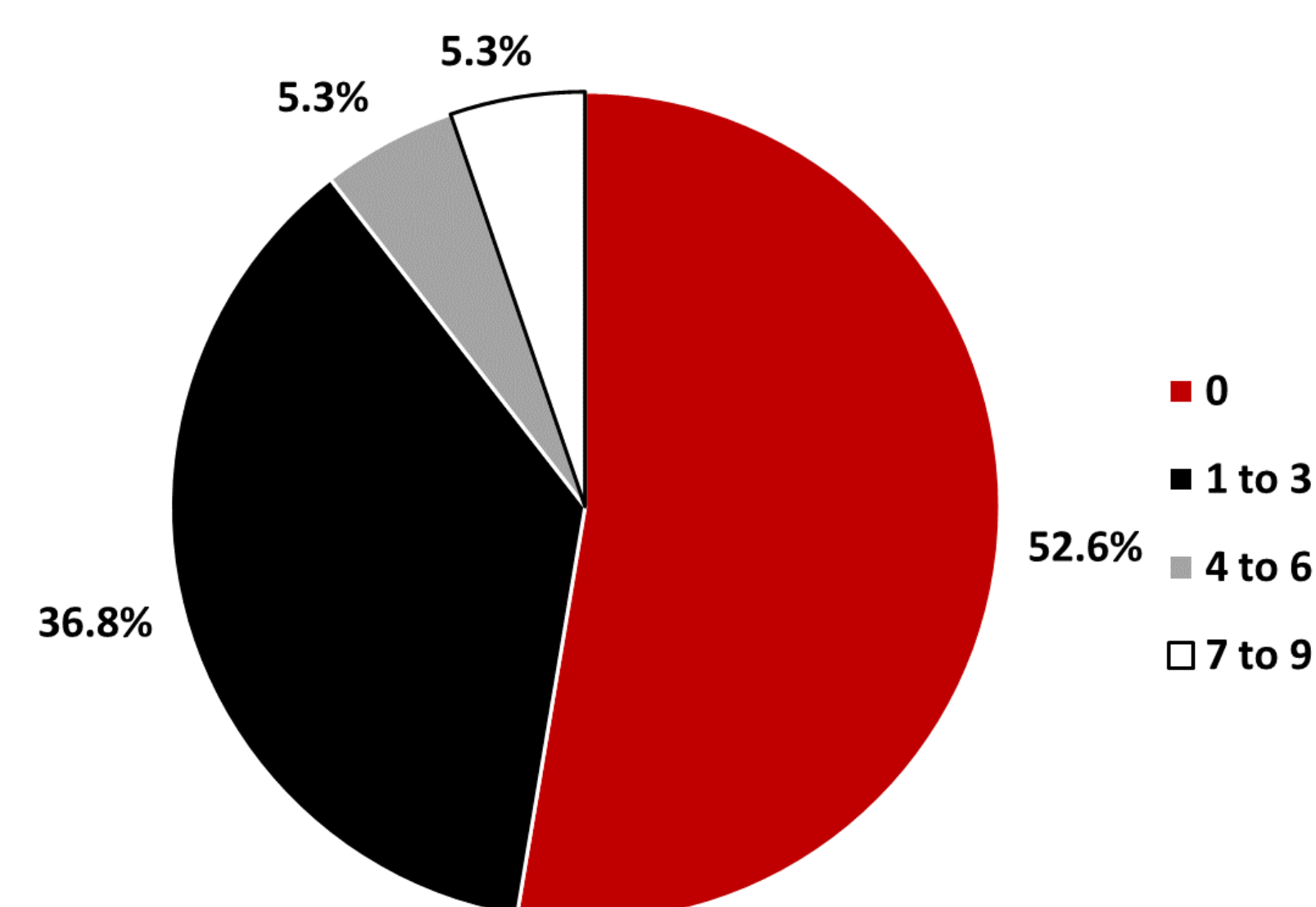
After attending or viewing the recorded webinar, did you conduct online programming using Webex (either in Meetings, Trainings, or Events)?



After attending or viewing the recorded webinar, did you conduct any polls in your Webex online programming (either in Meetings, Trainings, or Events)?



How many webinars have you conducted that included polls after attending or watching the 'Webex Polling Tutorial'?



Which of the following types of polls did you conduct as part of your own webinars?

Poll Type	% of Respondents
None	22.9%
Program Evaluation	22.9%
Audience Demographics	14.3%
Knowledge Gain	11.4%
Behavior Change	11.4%
Audience Feedback	17.1%
Other	0.0%

Conclusion

While the COVID-19 pandemic was unexpected, there were many ways that Extension across the country strategized to meet the unique challenges brought on by the pandemic. Many of these responses focused on ways to meet the needs of clientele and non-Extension professionals. This webinar is singular in that it effectively responded to an immediate need of Extension professionals in New Jersey through a peer-to-peer professional development webinar.